

## AffiniPure Goat Anti-Mouse IgG H&amp;L (min X Hu, Bov, Hrs, Rb, Sw Sr Prot) Secondary Antibody-HRP

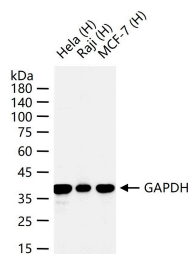
## Product Details

|               |                    |
|---------------|--------------------|
| Ig Type:      | IgG1               |
| Reactivity:   | Mouse              |
| Purification: | Protein G purified |

## Applications

## Verified Activity:

1. 25 ug total protein per lane of various lysates (see on figure) probed with GAPDH polyclonal antibody, unconjugated at 1:5000 dilution and 4°C overnight incubation. Followed by conjugated secondary antibody (TMAB-02061H) at 1:20000 dilution and r.t. for 60 min incubation.



Application: ELISA,IHC-F,IHC-P,WB

Recommended WB: 1:5000-50000; IHC-P: 1:100-500; IHC-F: 1:3000-5000; ELISA: 1:5000-50000

## Properties

Stability & Storage: Store at -20°C or -80°C for 12 months. Avoid repeated freeze-thaw cycles.

Shipping: Shipping with blue ice.

## Antigen Details

Immunogen: Native Mouse IgG

Synonyms: AffiniPure Goat Anti-Mouse IgG (H+L)/HRP; Peroxidase AffiniPure Goat Anti-Mouse IgG (H+L); AffiniPure Goat Anti-Rabbit IgG H&L (min X Hu, Ms, Rat Sr Prot)/HRP; HRP AffiniPure Goat Anti-Mouse IgG (H+L)

## Research Background

Immunoglobulin G (IgG), is one of the most abundant proteins in serum with normal levels between 8-17 mg/mL in adult blood. IgG is important for our defence against microorganisms and the molecules are produced by B lymphocytes as a part of our adaptive immune response. The IgG molecule has two separate functions; to bind to the pathogen that elicited the response and to recruit other cells and molecules to destroy the antigen. The variability of the IgG pool is generated by somatic recombination and the number of specificities in an individual at a given time point is estimated to be 1011 variants.

**Inhibitor · Natural Compounds · Compound Libraries · Recombinant Proteins**

This product is for Research Use Only · Not for Human or Veterinary or Therapeutic Use

Tel:781-999-4286 E\_mail:info@targetmol.com Address:34 Washington Street,Wellesley Hills,MA 02481