

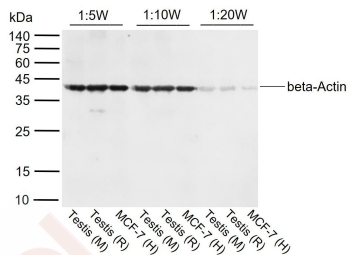
Goat Anti-Rabbit IgG H&L Secondary Antibody-IRDye 800cw

Product Details

Ig Type: IgG1
 Reactivity: Rabbit
 Purification: Protein G purified

Applications

1. Sample:
 Lane 1,4,7: Mouse Testis tissue lysates
 Lane 2,5,8: Rat Testis tissue lysates
 Lane 3,6,9: Human MCF-7 cell lysates
 Verified Activity:
 Primary: Anti-beta-Actin at 1/1:2000 dilution
 Secondary: IRDye800CW Goat anti-Rabbit IgG at 1:50000~200000 dilution
 Predicted band size: 42 kDa
 Observed band size: 42 kDa



Application: WB
 Recommended WB: 1:10000-30000

Properties

Stability & Storage: Store at -20°C or -80°C for 12 months. Avoid repeated freeze-thaw cycles.
 Shipping: Shipping with blue ice.

Antigen Details

Immunogen: Native Rabbit IgG
 Synonyms: Immunoglobulin G;IRDye® 800CW Goat anti-Rabbit IgG H&L

Research Background

IRDye800CW Conjugated Goat (polyclonal) Anti-Rabbit IgG(H+L), Highly Cross Adsorbed
 Producer: Li-Cor(USA)
 Product Number: 926-32211
 Fluorophore: IRDye 800CW(MW: 1166)
 Excitation Wavelength: 778nm(in PBS)
 Emission Wavelength: 795nm(in PBS)
 Fluorophore/Protein Ratio: 1.7 moles IRDye 800CW: 1mole IgG
 IRDye 800CW antibodies can be used for a variety of applications, including Western blotting, In-Cell Western assays,

A DRUG SCREENING EXPERT

In-Gel Westerns, and many others.

Isolation of specific antibodies was accomplished by immunoaffinity chromatography using antigens immobilized on agarose beads. Based on immunoelectrophoresis, this antibody reacts with the heavy chains of rabbit IgG as well as the light chains common to most rabbit immunoglobulins. No reactivity was detected against non-immunoglobulin serum proteins. This antibody was tested by ELISA and/or solid phase adsorbed for minimal cross-reactivity with human, mouse, and rat serum proteins, but may cross-react with immunoglobulins from other species. The conjugate has been specifically tested and qualified for Western blot and In-Cell Western applications.

Inhibitor · Natural Compounds · Compound Libraries · Recombinant Proteins

This product is for Research Use Only · Not for Human or Veterinary or Therapeutic Use

Tel: 781-999-4286 E_mail: info@targetmol.com Address: 34 Washington Street, Wellesley Hills, MA 02481