

AffiniPure Goat Anti-Rabbit IgG H&L Secondary Antibody-HRP

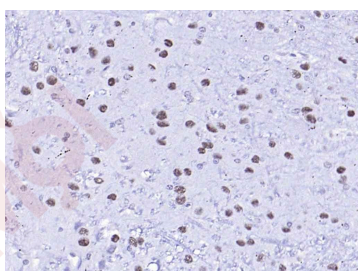
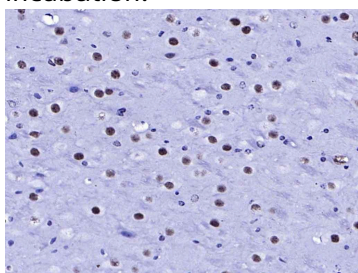
Product Details

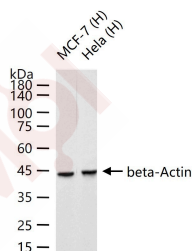
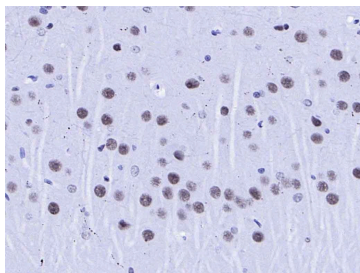
Ig Type:	IgG
Reactivity:	Rabbit
Purification:	Protein G purified

Applications

1. Paraformaldehyde-fixed, paraffin embedded (mouse brain); Antigen retrieval by boiling in sodium citrate buffer (pH6.0) for 15 min; Block endogenous peroxidase by 3% hydrogen peroxide for 20 minutes; Blocking buffer (normal goat serum) at 37°C for 30 min; Antibody incubation with (B MyB) Polyclonal Antibody, Unconjugated at 1:200 overnight at 4°C, Secondary antibody was Goat Anti-Rabbit IgG H&L (HRP) (TMAB-02060H) at 1/200 dilution and DAB staining.
2. Paraformaldehyde-fixed, paraffin embedded (rat cerebellum); Antigen retrieval by boiling in sodium citrate buffer (pH6.0) for 15 min; Block endogenous peroxidase by 3% hydrogen peroxide for 20 minutes; Blocking buffer (normal goat serum) at 37°C for 30 min; Antibody incubation with (B MyB) Polyclonal Antibody, Unconjugated at 1:200 overnight at 4°C, Secondary antibody was Goat Anti-Rabbit IgG H&L (HRP) (TMAB-02060H) at 1/200 dilution and DAB staining.
3. Paraformaldehyde-fixed, paraffin embedded (rat brain); Antigen retrieval by boiling in sodium citrate buffer (pH6.0) for 15 min; Block endogenous peroxidase by 3% hydrogen peroxide for 20 minutes; Blocking buffer (normal goat serum) at 37°C for 30 min; Antibody incubation with (B MyB) Polyclonal Antibody, Unconjugated at 1:200 overnight at 4°C, Secondary antibody was Goat Anti-Rabbit IgG H&L (HRP) (TMAB-02060H) at 1/200 dilution and DAB staining.
4. 25 ug total protein per lane of various lysates (see on figure) probed with beta-Actin polyclonal antibody, unconjugated at 1:10000 dilution and 4°C overnight incubation. Followed by conjugated secondary antibody (TMAB-02060H) at 1:20000 dilution and r.t. for 60 min incubation.

Verified Activity:





Application: ELISA,IHC-F,IHC-P,WB

Recommended WB: 1:5000-20000; IHC-P: 1:3000-5000; IHC-F: 1:3000-5000; ELISA: 1:5000-20000

Properties

Stability & Storage: Store at -20°C or -80°C for 12 months. Avoid repeated freeze-thaw cycles.

Shipping: Shipping with blue ice.

Antigen Details

Immunogen: Native Rabbit IgG

Synonyms: HRP AffiniPure Goat Anti-Rabbit IgG (H+L); Peroxidase AffiniPure Goat Anti-Rabbit IgG (H+L); AffiniPure Goat Anti-Rabbit IgG (H+L) (min X Hu, Ms, Rat Sr Prot)/HRP; AffiniPure Goat Anti-Rabbit IgG H&L(HRP); AffiniPure Goat Anti-Rabbit IgG H&L/HRP

Research Background

HRP Conjugated Goat (polyclonal) Anti-Rabbit IgG(H+L), Highly Cross Adsorbed

HRP antibodies can be used for a variety of applications, including ELISA, Western blotting, In-Cell Western assays, In-Gel Westerns, and many others.

Isolation of specific antibodies was accomplished by immunoaffinity chromatography using antigens immobilized on agarose beads. Based on immunoelectrophoresis, this antibody reacts with the heavy chains of rabbit IgG as well as the light chains common to most rabbit immunoglobulins. No reactivity was detected against non-immunoglobulin serum proteins. This antibody was tested by ELISA and/or solid phase adsorbed for minimal cross-reactivity with human, mouse, and rat serum proteins, but may cross-react with immunoglobulins from other species. The conjugate has been specifically tested and qualified for Western blot and ELISA applications.

Inhibitor · Natural Compounds · Compound Libraries · Recombinant Proteins

This product is for Research Use Only · Not for Human or Veterinary or Therapeutic Use

Tel:781-999-4286 E_mail:info@targetmol.com Address:34 Washington Street,Wellesley Hills,MA 02481