

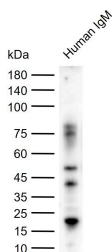
Goat Anti-Human IgM Secondary Antibody-HRP

Product Details

Ig Type:	IgG
Reactivity:	Human
Purification:	Protein G purified

Applications

Verified Activity:	1. Sample: Lane 1: Human IgM Primary: Anti-Human IgM / HRP (TMAB-02033H) at 1/20000 dilution Predicted band size: kDa Observed band size: kDa
--------------------	---



Application:	ELISA,IHC-F,IHC-P,WB
Recommended	WB: 1:1000-10000; IHC-P: 1:100-500; IHC-F: 1:100-1000; ELISA: 1:1000-10000

Properties

Stability & Storage:	Store at -20°C or -80°C for 12 months. Avoid repeated freeze-thaw cycles.
Shipping:	Shipping with blue ice.

Antigen Details

Immunogen:	Native Human IgM
Synonyms:	Goat Anti-Human IgM (HRP);Immunoglobulin M

Research Background

IgM normally constitutes about 10% of serum immunoglobulins. IgM antibody is prominent in early immune responses to most antigens and is largely confined to plasma due to its large size. Monomeric IgM is expressed as a membrane bound antibody on the surface of B cells and as a pentamer when secreted by plasma cells. Due to its high valency IgM is more efficient than other isotypes in binding antigens with repeating epitopes (virus particles and red blood cells) and is more efficient than IgG in activating the complement pathway. The gene for the mu constant region contains four domains separated by short intervening sequences.

Inhibitor · Natural Compounds · Compound Libraries · Recombinant Proteins

This product is for Research Use Only. Not for Human or Veterinary or Therapeutic Use

Tel:781-999-4286 E_mail:info@targetmol.com Address:34 Washington Street,Wellesley Hills,MA 02481