

Rabbit Anti-Mouse IgG H&L Secondary Antibody-HRP

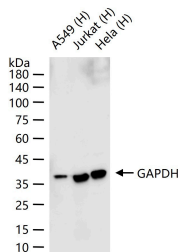
Product Details

Ig Type:	IgG
Reactivity:	Mouse
Purification:	Protein A purified

Applications

Verified Activity:

1. 25 ug total protein per lane of various lysates (see on figure) probed with GAPDH polyclonal antibody, unconjugated at 1:5000 dilution and 4°C overnight incubation. Followed by conjugated secondary antibody (TMAB-02011H) at 1:20000 dilution and r.t. for 60 min incubation.



Application: ELISA, IHC-F, IHC-P, WB

Recommended WB: 1:2000-20000; IHC-P: 1:100-500; IHC-F: 1:100-1000; ELISA: 1:1000-10000

Properties

Stability & Storage: Store at -20°C or -80°C for 12 months. Avoid repeated freeze-thaw cycles.

Shipping: Shipping with blue ice.

Antigen Details

Immunogen: Native Mouse IgG

Synonyms: Immunoglobulin G; Rabbit Anti-Mouse IgG H&L (HRP)

Research Background

Immunoglobulin G (IgG), is one of the most abundant proteins in serum with normal levels between 8-17 mg/mL in adult blood. IgG is important for our defence against microorganisms and the molecules are produced by B lymphocytes as a part of our adaptive immune response. The IgG molecule has two separate functions; to bind to the pathogen that elicited the response and to recruit other cells and molecules to destroy the antigen. The variability of the IgG pool is generated by somatic recombination and the number of specificities in an individual at a given time point is estimated to be 1011 variants.

Inhibitor · Natural Compounds · Compound Libraries · Recombinant Proteins

This product is for Research Use Only · Not for Human or Veterinary or Therapeutic Use

Tel: 781-999-4286 E_mail: info@targetmol.com Address: 34 Washington Street, Wellesley Hills, MA 02481