

## Goat Anti-Mouse IgG H&L Secondary Antibody-AF488

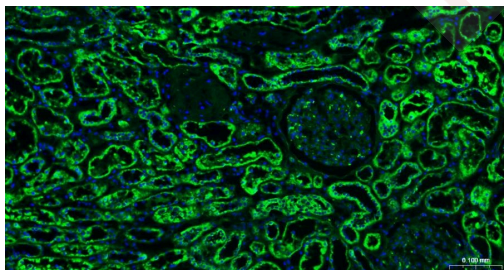
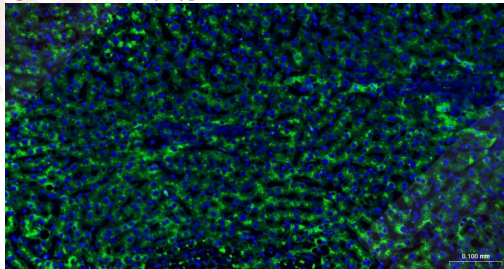
### Product Details

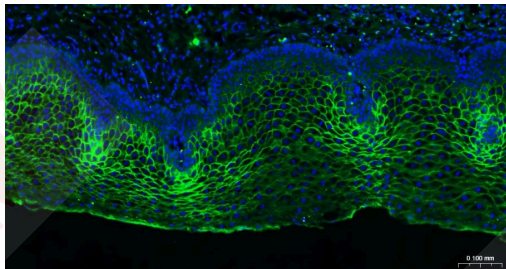
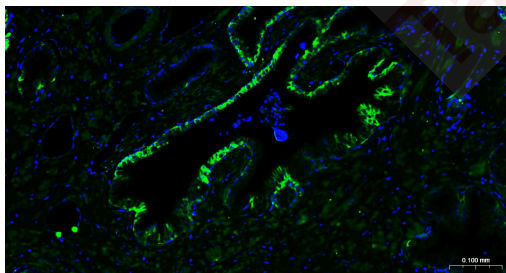
Ig Type:	IgG
Reactivity:	Mouse
Purification:	Affinity purified by Protein G, nonspecific adsorbed

### Applications

#### Verified Activity:

1. Paraformaldehyde-fixed, paraffin embedded Human Liver; Antigen retrieval by boiling in sodium citrate buffer (pH6.0) for 15 min; Antibody incubation with LAMP1 Monoclonal Antibody, Unconjugated at 1:200 overnight at 4°C. Followed by conjugated Goat Anti-Mouse IgG antibody (green, TMAB-02010AF488), DAPI (blue) was used to stain the cell nuclei.
2. Paraformaldehyde-fixed, paraffin embedded Human Kidney; Antigen retrieval by boiling in sodium citrate buffer (pH6.0) for 15 min; Antibody incubation with LAMP1 Monoclonal Antibody, Unconjugated at 1:200 overnight at 4°C. Followed by conjugated Goat Anti-Mouse IgG antibody (green, TMAB-02010AF488), DAPI (blue) was used to stain the cell nuclei.
3. Paraformaldehyde-fixed, paraffin embedded Human Prostate; Antigen retrieval by boiling in sodium citrate buffer (pH6.0) for 15 min; Antibody incubation with TROP2 Monoclonal Antibody, Unconjugated at 1:200 overnight at 4°C. Followed by conjugated Goat Anti-Mouse IgG antibody (green, TMAB-02010AF488), DAPI (blue) was used to stain the cell nuclei.
4. Paraformaldehyde-fixed, paraffin embedded Human Esophagus; Antigen retrieval by boiling in sodium citrate buffer (pH6.0) for 15 min; Antibody incubation with TROP2 Monoclonal Antibody, Unconjugated at 1:200 overnight at 4°C. Followed by conjugated Goat Anti-Mouse IgG antibody (green, TMAB-02010AF488), DAPI (blue) was used to stain the cell nuclei.





Application: FCM,ICC/IF,IF

Recommended IF: 1:200-1000; FCM: 1:50-200; ICC/IF: 1:100-1000

---

### Properties

Stability & Storage: Store at -20°C or -80°C for 12 months. Avoid repeated freeze-thaw cycles.

Shipping: Shipping with blue ice.

---

### Antigen Details

Immunogen: Native Mouse IgG

Synonyms: Immunoglobulin G;Goat Anti-Mouse IgG H&L (AF488)

---

### Research Background

Immunoglobulin G (IgG), is one of the most abundant proteins in serum with normal levels between 8-17 mg/mL in adult blood. IgG is important for our defence against microorganisms and the molecules are produced by B lymphocytes as a part of our adaptive immune response. The IgG molecule has two separate functions; to bind to the pathogen that elicited the response and to recruit other cells and molecules to destroy the antigen. The variability of the IgG pool is generated by somatic recombination and the number of specificities in an individual at a given time point is estimated to be 1011 variants.

**Inhibitor · Natural Compounds · Compound Libraries · Recombinant Proteins**

This product is for Research Use Only· Not for Human or Veterinary or Therapeutic Use

Tel:781-999-4286 E\_mail:info@targetmol.com Address:34 Washington Street,Wellesley Hills,MA 02481

---