

Goat Anti-Rabbit IgG H&L Secondary Antibody-AF594

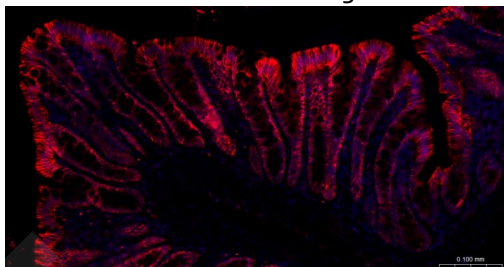
Product Details

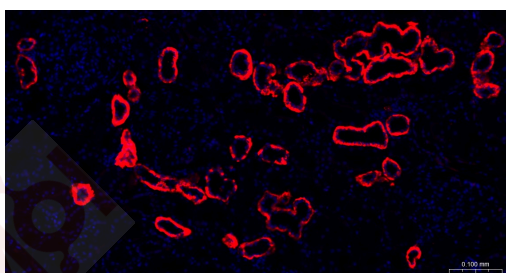
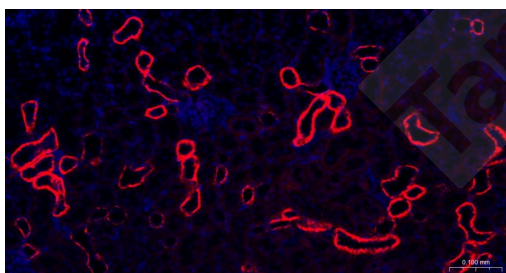
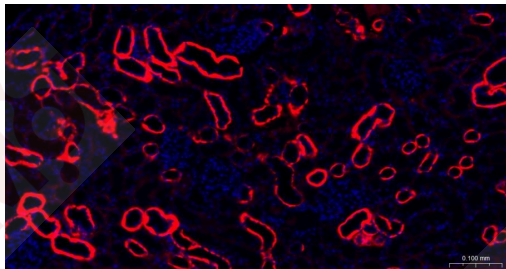
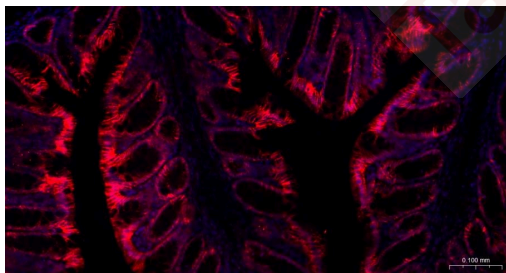
Ig Type:	IgG
Reactivity:	Rabbit
Purification:	Affinity purified by Protein G, nonspecific adsorbed

Applications

1. Paraformaldehyde-fixed, paraffin embedded (rat colon); Antigen retrieval by boiling in sodium citrate buffer (pH6.0) for 15 min; Blocking buffer (normal goat serum) at 37°C for 30 min; Incubation with (ATP1A1) Polyclonal Antibody, Unconjugated at 1:200 overnight at 4°C, followed by a conjugated Goat Anti-Rabbit IgG antibody (TMAB-02008AF594) for 90 minutes, and DAPI for nuclei staining.
2. Paraformaldehyde-fixed, paraffin embedded (mouse colon); Antigen retrieval by boiling in sodium citrate buffer (pH6.0) for 15 min; Blocking buffer (normal goat serum) at 37°C for 30 min; Incubation with (ATP1A1) Polyclonal Antibody, Unconjugated at 1:200 overnight at 4°C, followed by a conjugated Goat Anti-Rabbit IgG antibody (TMAB-02008AF594) for 90 minutes, and DAPI for nuclei staining.
3. Paraformaldehyde-fixed, paraffin embedded (mouse kidney); Antigen retrieval by boiling in sodium citrate buffer (pH6.0) for 15 min; Blocking buffer (normal goat serum) at 37°C for 30 min; Incubation with (ATP1A1) Polyclonal Antibody, Unconjugated at 1:200 overnight at 4°C, followed by a conjugated Goat Anti-Rabbit IgG antibody (TMAB-02008AF594) for 90 minutes, and DAPI for nuclei staining.
4. Paraformaldehyde-fixed, paraffin embedded (rat kidney); Antigen retrieval by boiling in sodium citrate buffer (pH6.0) for 15 min; Blocking buffer (normal goat serum) at 37°C for 30 min; Incubation with (ATP1A1) Polyclonal Antibody, Unconjugated at 1:200 overnight at 4°C, followed by a conjugated Goat Anti-Rabbit IgG antibody (TMAB-02008AF594) for 90 minutes, and DAPI for nuclei staining.
5. Paraformaldehyde-fixed, paraffin embedded (human kidney); Antigen retrieval by boiling in sodium citrate buffer (pH6.0) for 15 min; Blocking buffer (normal goat serum) at 37°C for 30 min; Incubation with (ATP1A1) Polyclonal Antibody, Unconjugated at 1:200 overnight at 4°C, followed by a conjugated Goat Anti-Rabbit IgG antibody (TMAB-02008AF594) for 90 minutes, and DAPI for nuclei staining.

Verified Activity:





Application: FCM,ICC/IF,IF

Recommended IF: 1:200-1000; FCM: 1:50-200; ICC/IF: 1:100-1000

Properties

Stability & Storage: Store at -20°C or -80°C for 12 months. Avoid repeated freeze-thaw cycles.

Shipping: Shipping with blue ice.

Antigen Details

Immunogen: Native Rabbit IgG

Synonyms: Immunoglobulin G;Goat Anti-Rabbit IgG H&L (AF594)

Inhibitor · Natural Compounds · Compound Libraries · Recombinant Proteins

This product is for Research Use Only· Not for Human or Veterinary or Therapeutic Use

Tel:781-999-4286 E_mail:info@targetmol.com Address:34 Washington Street,Wellesley Hills,MA 02481