

Donkey Anti-Rabbit IgG H&L Secondary Antibody-AF647

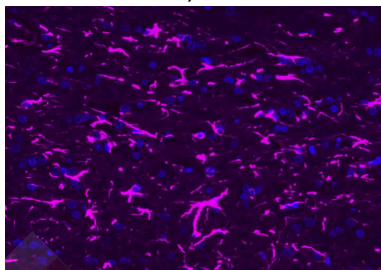
Product Details

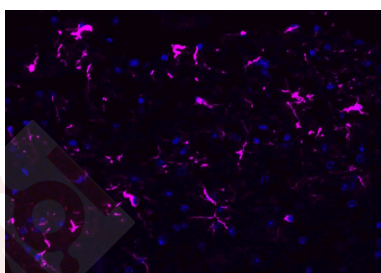
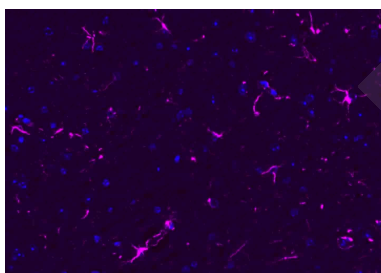
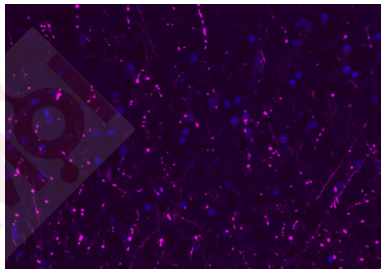
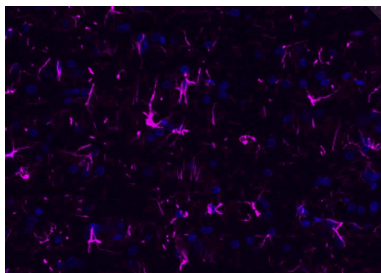
Ig Type:	IgG
Reactivity:	Rabbit
Purification:	Protein G purified

Applications

1. Paraformaldehyde-fixed, paraffin embedded (rat brain); Antigen retrieval by boiling in sodium citrate buffer (pH6.0) for 15 min; Blocking buffer (normal goat serum) at 37°C for 30 min; Antibody incubation with (GFAP) Polyclonal Antibody, Unconjugated at 1:200 overnight at 4°C, followed by a conjugated Goat Anti-Rabbit IgG antibody (TMAB-02007AF647) for 90 minutes, and DAPI for nuclei staining.
2. Paraformaldehyde-fixed, paraffin embedded (rat cerebellum); Antigen retrieval by boiling in sodium citrate buffer (pH6.0) for 15 min; Blocking buffer (normal goat serum) at 37°C for 30 min; Antibody incubation with (GFAP) Polyclonal Antibody, Unconjugated at 1:200 overnight at 4°C, followed by a conjugated Goat Anti-Rabbit IgG antibody (TMAB-02007AF647) for 90 minutes, and DAPI for nuclei staining.
3. Paraformaldehyde-fixed, paraffin embedded (human brain); Antigen retrieval by boiling in sodium citrate buffer (pH6.0) for 15 min; Blocking buffer (normal goat serum) at 37°C for 30 min; Antibody incubation with (GFAP) Polyclonal Antibody, Unconjugated at 1:200 overnight at 4°C, followed by a conjugated Goat Anti-Rabbit IgG antibody (TMAB-02007AF647) for 90 minutes, and DAPI for nuclei staining.
4. Paraformaldehyde-fixed, paraffin embedded (mouse brain); Antigen retrieval by boiling in sodium citrate buffer (pH6.0) for 15 min; Blocking buffer (normal goat serum) at 37°C for 30 min; Antibody incubation with (GFAP) Polyclonal Antibody, Unconjugated at 1:200 overnight at 4°C, followed by a conjugated Goat Anti-Rabbit IgG antibody (TMAB-02007AF647) for 90 minutes, and DAPI for nuclei staining.
5. Paraformaldehyde-fixed, paraffin embedded (mouse cerebellum); Antigen retrieval by boiling in sodium citrate buffer (pH6.0) for 15 min; Blocking buffer (normal goat serum) at 37°C for 30 min; Antibody incubation with (GFAP) Polyclonal Antibody, Unconjugated at 1:200 overnight at 4°C, followed by a conjugated Goat Anti-Rabbit IgG antibody (TMAB-02007AF647) for 90 minutes, and DAPI for nuclei staining.

Verified Activity:





Application: FCM, ICC/IF, IF

Recommended IF: 1:100-1000; FCM: 1:100-1000; ICC/IF: 1:100-1000

Properties

Stability & Storage: Store at -20°C or -80°C for 12 months. Avoid repeated freeze-thaw cycles.

Shipping: Shipping with blue ice.

Antigen Details

Immunogen: Native Rabbit IgG

Synonyms: Immunoglobulin G; Donkey Anti-Rabbit IgG H&L (AF647)

Research Background

Immunoglobulin G (IgG), is one of the most abundant proteins in serum with normal levels between 8-17 mg/mL in adult blood. IgG is important for our defence against microorganisms and the molecules are produced by B lymphocytes as a part of our adaptive immune response. The IgG molecule has two separate functions; to bind to the pathogen that elicited the response and to recruit other cells and molecules to destroy the antigen. The variability of the IgG pool is generated by somatic recombination and the number of specificities in an individual at a given time point is estimated to be 10¹¹ variants.

Inhibitor · Natural Compounds · Compound Libraries · Recombinant Proteins

This product is for Research Use Only · Not for Human or Veterinary or Therapeutic Use

Tel:781-999-4286 E_mail:info@targetmol.com Address:34 Washington Street,Wellesley Hills,MA 02481