

## Rabbit Anti-Goat IgG H&amp;L Secondary Antibody-HRP

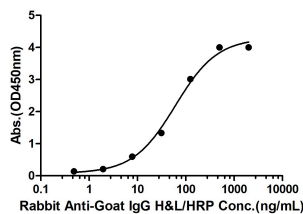
## Product Details

Ig Type:	IgG
Reactivity:	Goat
Purification:	Protein A purified

## Applications

Verified Activity: 1. Measured by its binding ability in a direct ELISA. Immobilized Goat IgG at 2 µg/mL (100 µL/well) can bind Rabbit Anti-Goat IgG H&L/HRP, the minimum detection concentration is 1.95 ng/mL.

Rabbit Anti-Goat IgG H&amp;L/HRP Binding with Goat IgG



Application: ELISA,IHC-F,IHC-P,WB

Recommended WB: 1:2000-20000; IHC-P: 1:200-1000; IHC-F: 1:200-1000; ELISA: 1:2000-20000

## Properties

Stability & Storage: Store at -20°C or -80°C for 12 months. Avoid repeated freeze-thaw cycles.

Shipping: Shipping with blue ice.

## Antigen Details

Immunogen: Native Goat IgG

Synonyms: Rabbit Anti-Goat IgG H&L (HRP);Immunoglobulin G

## Research Background

Immunoglobulin G (IgG), is one of the most abundant proteins in serum with normal levels between 8-17 mg/mL in adult blood. IgG is important for our defence against microorganisms and the molecules are produced by B lymphocytes as a part of our adaptive immune response. The IgG molecule has two separate functions; to bind to the pathogen that elicited the response and to recruit other cells and molecules to destroy the antigen. The variability of the IgG pool is generated by somatic recombination and the number of specificities in an individual at a given time point is estimated to be 1011 variants.

**Inhibitor · Natural Compounds · Compound Libraries · Recombinant Proteins**

This product is for Research Use Only· Not for Human or Veterinary or Therapeutic Use

Tel:781-999-4286 E\_mail:info@targetmol.com Address:34 Washington Street,Wellesley Hills,MA 02481