

Alloc-Val-Ala-pAB

Chemical Properties

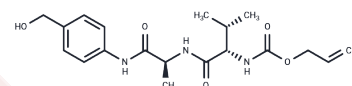
CAS No. : 1343407-91-9

Formula: C₁₉H₂₇N₃O₅

Molecular Weight: 377.435

Storage: Powder: -20°C for 3 years | In solvent: -80°C for 1 year

Actual storage temperature shall be subject to the COA.



Biological Description

Description	Alloc-Val-Ala-PAB is a cleavable peptide linker employed in the synthesis of antibody-drug conjugates (ADC). The Val-Ala sequence is specifically cleaved by cathepsin B. The Alloc group remains stable when treated with piperidine and TFA, yet it can be easily removed under mild conditions via palladium-catalyzed allyl transfer.
Targets(IC50)	ADC Linker

Preparing Stock Solutions

	1mg	5mg	10mg
1 mM	2.6494 mL	13.2471 mL	26.4943 mL
5 mM	0.5299 mL	2.6494 mL	5.2989 mL
10 mM	0.2649 mL	1.3247 mL	2.6494 mL
50 mM	0.053 mL	0.2649 mL	0.5299 mL

Please select the appropriate solvent to prepare the stock solution, according to the solubility of the product in different solvents. Please use it as soon as possible.

Note: The dilution table applies only to solid products. For liquid products, please calculate the stock solution based on the stated concentration and/or density.

Inhibitor · Natural Compounds · Compound Libraries · Recombinant Proteins

This product is for Research Use Only · Not for Human or Veterinary or Therapeutic Use

Tel:781-999-4286

E_mail:info@targetmol.com

Address:34 Washington Street,Wellesley Hills,MA 02481