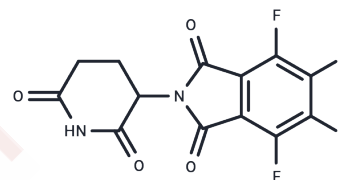


## Tetrafluoro-thalidomide

## Chemical Properties

|                   |  |
|-------------------|--|
| CAS No. :         | 179033-21-7  |
| Formula:          | C <sub>13</sub> H <sub>6</sub> F <sub>4</sub> N <sub>2</sub> O <sub>4</sub>  |
| Molecular Weight: | 330.191  |
| Storage:          | Keep away from direct sunlight<br>Powder: -20°C for 3 years   In solvent: -80°C for 1 year<br><small>Actual storage temperature shall be subject to the COA.</small> |



## Biological Description

|               |  |
|---------------|--|
| Description   | Tetrafluoro-thalidomide is a fluorinated analog of thalidomide. It acts as an activator of E3 ligase enzymes, facilitating the ubiquitination of proteins for subsequent proteolysis. The structure of tetrafluoro-thalidomide can be further derivatized through fluorine substitution. |
| Targets(IC50) | Ligands for E3 Ligase  |

## Preparing Stock Solutions

|       | 1mg       | 5mg        | 10mg       |
|-------|-----------|------------|------------|
| 1 mM  | 3.0286 mL | 15.1428 mL | 30.2856 mL |
| 5 mM  | 0.6057 mL | 3.0286 mL  | 6.0571 mL  |
| 10 mM | 0.3029 mL | 1.5143 mL  | 3.0286 mL  |
| 50 mM | 0.0606 mL | 0.3029 mL  | 0.6057 mL  |

Please select the appropriate solvent to prepare the stock solution, according to the solubility of the product in different solvents. Please use it as soon as possible.

Note: The dilution table applies only to solid products. For liquid products, please calculate the stock solution based on the stated concentration and/or density.

**Inhibitor · Natural Compounds · Compound Libraries · Recombinant Proteins**

This product is for Research Use Only · Not for Human or Veterinary or Therapeutic Use

Tel: 781-999-4286 E\_mail: info@targetmol.com Address: 34 Washington Street, Wellesley Hills, MA 02481