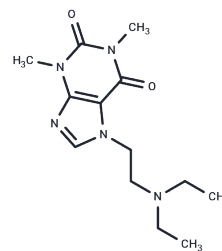


Etamiphyllin

Chemical Properties

CAS No. :	314-35-2
Formula:	C ₁₃ H ₂₁ N ₅ O ₂
Molecular Weight:	279.338
Storage:	Powder: -20°C for 3 years In solvent: -80°C for 1 year Actual storage temperature shall be subject to the COA.



Biological Description

Description	Etamiphyllin (Etamiphylline) is a xanthine compound that acts as a respiratory stimulant.
-------------	---

Preparing Stock Solutions

	1mg	5mg	10mg
1 mM	3.5799 mL	17.8993 mL	35.7987 mL
5 mM	0.716 mL	3.5799 mL	7.1597 mL
10 mM	0.358 mL	1.7899 mL	3.5799 mL
50 mM	0.0716 mL	0.358 mL	0.716 mL

Please select the appropriate solvent to prepare the stock solution, according to the solubility of the product in different solvents. Please use it as soon as possible.

Note: The dilution table applies only to solid products. For liquid products, please calculate the stock solution based on the stated concentration and/or density.

Inhibitor · Natural Compounds · Compound Libraries · Recombinant Proteins

This product is for Research Use Only · Not for Human or Veterinary or Therapeutic Use

Tel:781-999-4286 E_mail:info@targetmol.com Address:34 Washington Street,Wellesley Hills,MA 02481