

MC-val-ala-nhs ester

Chemical Properties

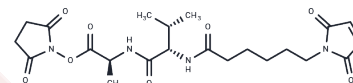
CAS No. : 1895916-22-9

Formula: C₂₂H₃₀N₄O₈

Molecular Weight: 478.496

Storage: Powder: -20°C for 3 years | In solvent: -80°C for 1 year

Actual storage temperature shall be subject to the COA.



Biological Description

Description	MC-Val-Ala-NHS ester is a cleavable ADC linker featuring maleimide and NHS ester groups. The Val-Ala linker is susceptible to cleavage by cathepsin B. The maleimide group can react with thiol groups, as can the MC component. The NHS ester reacts specifically and efficiently with amines (such as lysine residue side chains or aminosilane-coated surfaces) under neutral or mildly alkaline conditions, forming covalent bonds. Reagent grade, intended for research use only.
Targets(IC50)	ADC Linker

Preparing Stock Solutions

	1mg	5mg	10mg
1 mM	2.0899 mL	10.4493 mL	20.8986 mL
5 mM	0.418 mL	2.0899 mL	4.1797 mL
10 mM	0.209 mL	1.0449 mL	2.0899 mL
50 mM	0.0418 mL	0.209 mL	0.418 mL

Please select the appropriate solvent to prepare the stock solution, according to the solubility of the product in different solvents. Please use it as soon as possible.

Note: The dilution table applies only to solid products. For liquid products, please calculate the stock solution based on the stated concentration and/or density.

Inhibitor · Natural Compounds · Compound Libraries · Recombinant Proteins

This product is for Research Use Only · Not for Human or Veterinary or Therapeutic Use

Tel:781-999-4286

E_mail:info@targetmol.com

Address:34 Washington Street,Wellesley Hills,MA 02481