

SPDP-Gly-Gly-methoxy

Chemical Properties

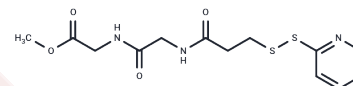
CAS No. : 2655474-48-7

Formula: C₁₃H₁₇N₃O₄S₂

Molecular Weight: 343.422

Storage: Powder: -20°C for 3 years | In solvent: -80°C for 1 year

Actual storage temperature shall be subject to the COA.



Biological Description

Description	SPDP-Gly-Gly-methoxy is a linker comprising SPDP and a methyl ester component. SPDP functions as a crosslinker that reacts with amines and thiols. Its membrane permeability allows it to engage in intracellular crosslinking reactions.
-------------	---

Preparing Stock Solutions

	1mg	5mg	10mg
1 mM	2.9119 mL	14.5594 mL	29.1189 mL
5 mM	0.5824 mL	2.9119 mL	5.8238 mL
10 mM	0.2912 mL	1.4559 mL	2.9119 mL
50 mM	0.0582 mL	0.2912 mL	0.5824 mL

Please select the appropriate solvent to prepare the stock solution, according to the solubility of the product in different solvents. Please use it as soon as possible.

Note: The dilution table applies only to solid products. For liquid products, please calculate the stock solution based on the stated concentration and/or density.

Inhibitor · Natural Compounds · Compound Libraries · Recombinant Proteins

This product is for Research Use Only · Not for Human or Veterinary or Therapeutic Use

Tel:781-999-4286 E_mail:info@targetmol.com Address:34 Washington Street,Wellesley Hills,MA 02481