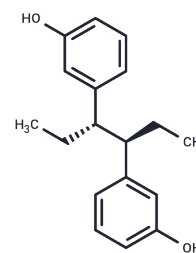


Metahexestrol

Chemical Properties

| | |
|-------------------|---|
| CAS No. : | 71953-72-5 |
| Formula: | C ₁₈ H ₂₂ O ₂ |
| Molecular Weight: | 270.366 |
| Storage: | Powder: -20°C for 3 years In solvent: -80°C for 1 year Actual storage temperature shall be subject to the COA. |



Biological Description

| | |
|---------------|--|
| Description | Metahexestrol is an inhibitor of the estrogen receptor (E2R) with antitumor activity. It significantly inhibits the proliferation of estrogen receptor-positive MCF-7 human breast cancer cell line with an ED50 of 1.0 μM. Additionally, Metahexestrol shows inhibitory activity in estrogen receptor-negative MDA-MB-231 cell lines, and its antiproliferative effect is not reversed by estrogen, suggesting that its mechanism may be partially independent of the E2R pathway. Metahexestrol is applicable in research on estrogen-dependent breast cancer. |
| Targets(IC50) | Estrogen Receptor/ERR |

Preparing Stock Solutions

| | 1mg | 5mg | 10mg |
|-------|-----------|------------|------------|
| 1 mM | 3.6986 mL | 18.4932 mL | 36.9864 mL |
| 5 mM | 0.7397 mL | 3.6986 mL | 7.3973 mL |
| 10 mM | 0.3699 mL | 1.8493 mL | 3.6986 mL |
| 50 mM | 0.074 mL | 0.3699 mL | 0.7397 mL |

Please select the appropriate solvent to prepare the stock solution, according to the solubility of the product in different solvents. Please use it as soon as possible.

Note: The dilution table applies only to solid products. For liquid products, please calculate the stock solution based on the stated concentration and/or density.

Inhibitor · Natural Compounds · Compound Libraries · Recombinant Proteins

This product is for Research Use Only · Not for Human or Veterinary or Therapeutic Use

Tel:781-999-4286 E_mail:info@targetmol.com Address:34 Washington Street,Wellesley Hills,MA 02481