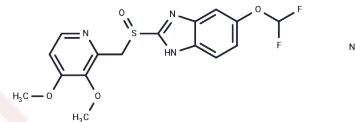


(R)-(+)-Pantoprazole sodium

Chemical Properties

CAS No. :	160098-11-3
Formula:	C ₁₆ H ₁₅ F ₂ N ₃ NaO ₄ S
Molecular Weight:	406.36
Storage:	Powder: -20°C for 3 years In solvent: -80°C for 1 year Actual storage temperature shall be subject to the COA.



Biological Description

Description	(R)-(+)-Pantoprazole ((R)-(+)-BY1023) sodium is a proton pump inhibitor used in the study of esophageal erosion and ulcers.
Targets(IC50)	Proton pump

Preparing Stock Solutions

	1mg	5mg	10mg
1 mM	2.4609 mL	12.3044 mL	24.6087 mL
5 mM	0.4922 mL	2.4609 mL	4.9217 mL
10 mM	0.2461 mL	1.2304 mL	2.4609 mL
50 mM	0.0492 mL	0.2461 mL	0.4922 mL

Please select the appropriate solvent to prepare the stock solution, according to the solubility of the product in different solvents. Please use it as soon as possible.

Note: The dilution table applies only to solid products. For liquid products, please calculate the stock solution based on the stated concentration and/or density.

Inhibitor · Natural Compounds · Compound Libraries · Recombinant Proteins

This product is for Research Use Only · Not for Human or Veterinary or Therapeutic Use

Tel:781-999-4286 E_mail:info@targetmol.com Address:34 Washington Street,Wellesley Hills,MA 02481