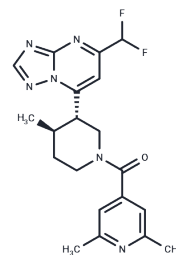


## PDE2 inhibitor 6

## Chemical Properties

CAS No. :	2097493-39-3
Formula:	C <sub>20</sub> H <sub>22</sub> F <sub>2</sub> N <sub>6</sub> O
Molecular Weight:	400.425
Storage:	Powder: -20°C for 3 years   In solvent: -80°C for 1 year Actual storage temperature shall be subject to the COA.



## Biological Description

Description	PDE2 inhibitor6 (Compound 1) is an orally active phosphodiesterase (PDE) inhibitor, effectively inhibiting PDE2A, PDE3B, and PDE10A2 with IC <sub>50</sub> values of 0.95 nM, 6.17 μM (pIC <sub>50</sub> =5.21), and 87.1 nM (pIC <sub>50</sub> =7.06), respectively. It modulates AMPA receptor activity, enhances synaptic plasticity, and improves learning and memory in rat models. Furthermore, PDE2 inhibitor6 possesses blood-brain barrier permeability.
Targets(IC <sub>50</sub> )	iGluR,PDE

## Preparing Stock Solutions

	1mg	5mg	10mg
1 mM	2.4973 mL	12.4866 mL	24.9732 mL
5 mM	0.4995 mL	2.4973 mL	4.9946 mL
10 mM	0.2497 mL	1.2487 mL	2.4973 mL
50 mM	0.0499 mL	0.2497 mL	0.4995 mL

Please select the appropriate solvent to prepare the stock solution, according to the solubility of the product in different solvents. Please use it as soon as possible.

Note: The dilution table applies only to solid products. For liquid products, please calculate the stock solution based on the stated concentration and/or density.

Inhibitor · Natural Compounds · Compound Libraries · Recombinant Proteins

This product is for Research Use Only · Not for Human or Veterinary or Therapeutic Use

Tel:781-999-4286 E\_mail:info@targetmol.com Address:34 Washington Street,Wellesley Hills,MA 02481