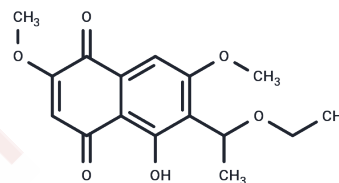


## 6-Ethoxyethyl-5-hydroxy-2,7-dimethoxy-1,4-naphthoquinone

### Chemical Properties

CAS No. : 86343-22-8  
 Formula: C<sub>16</sub>H<sub>18</sub>O<sub>6</sub>  
 Molecular Weight: 306.31  
 Storage: Powder: -20°C for 3 years | In solvent: -80°C for 1 year  
*Actual storage temperature shall be subject to the COA.*



### Biological Description

Description	6-Ethoxyethyl-5-hydroxy-2,7-dimethoxy-1,4-naphthoquinone is a naphthoquinone compound known to cause withering of larch branches and inhibit the germination and growth of lettuce seeds. At a concentration of 100 ppm, it completely inhibits the growth of hypocotyls and roots, and at 50 ppm, it suppresses over 95%.
Targets(IC50)	Others

### Preparing Stock Solutions

	1mg	5mg	10mg
1 mM	3.2647 mL	16.3233 mL	32.6467 mL
5 mM	0.6529 mL	3.2647 mL	6.5293 mL
10 mM	0.3265 mL	1.6323 mL	3.2647 mL
50 mM	0.0653 mL	0.3265 mL	0.6529 mL

Please select the appropriate solvent to prepare the stock solution, according to the solubility of the product in different solvents. Please use it as soon as possible.

Note: The dilution table applies only to solid products. For liquid products, please calculate the stock solution based on the stated concentration and/or density.

**Inhibitor · Natural Compounds · Compound Libraries · Recombinant Proteins**

This product is for Research Use Only · Not for Human or Veterinary or Therapeutic Use

Tel:781-999-4286 E\_mail:info@targetmol.com Address:34 Washington Street,Wellesley Hills,MA 02481