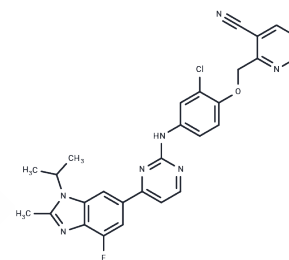


LA-CB1

Chemical Properties

CAS No. : 3032908-44-1
 Formula: C₂₈H₂₃ClFN₇O
 Molecular Weight: 527.98
 Storage: Powder: -20°C for 3 years | In solvent: -80°C for 1 year
 Actual storage temperature shall be subject to the COA.



Biological Description

Description	LA-CB1 is a derivative of Abemaciclib that targets CDK4/6 and promotes their degradation via the ubiquitin-proteasome pathway, thereby blocking the CDK4/6-Cyclin D1-Rb-E2F axis and inducing G0/G1 cell cycle arrest and apoptosis (Apoptosis). It demonstrates antiproliferative activity against MDA-MB-231 cells with an IC ₅₀ of 0.27 μM and effectively inhibits epithelial-mesenchymal transition, cell migration, invasion, and angiogenesis. In highly invasive models like triple-negative breast cancer (TNBC), LA-CB1 significantly suppresses tumor growth, showing robust dose-dependent antitumor activity. This compound can be utilized in breast cancer research.
Targets(IC ₅₀)	Apoptosis,CDK

Preparing Stock Solutions

	1mg	5mg	10mg
1 mM	1.894 mL	9.4701 mL	18.9401 mL
5 mM	0.3788 mL	1.894 mL	3.788 mL
10 mM	0.1894 mL	0.947 mL	1.894 mL
50 mM	0.0379 mL	0.1894 mL	0.3788 mL

Please select the appropriate solvent to prepare the stock solution, according to the solubility of the product in different solvents. Please use it as soon as possible.

Note: The dilution table applies only to solid products. For liquid products, please calculate the stock solution based on the stated concentration and/or density.

Inhibitor · Natural Compounds · Compound Libraries · Recombinant Proteins

This product is for Research Use Only · Not for Human or Veterinary or Therapeutic Use

Tel:781-999-4286 E_mail:info@targetmol.com Address:34 Washington Street,Wellesley Hills,MA 02481