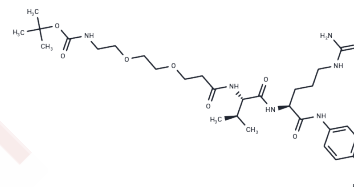


Boc-PEG2-Val-Cit-PAB-OH

Chemical Properties

CAS No. :	2055024-55-8
Formula:	C30H50N6O9
Molecular Weight:	638.753
Storage:	Powder: -20°C for 3 years In solvent: -80°C for 1 year <small>Actual storage temperature shall be subject to the COA.</small>



Biological Description

Description	Boc-PEG2-Val-Cit-PAB-OH is an enzymatically cleavable ADC linker featuring a Boc-protected amine, a hydrophilic PEG spacer, and a Val-Cit-PAB dipeptide. The benzyl alcohol on PAB can be utilized for attachment to reactive groups (such as PNP) to connect with a drug payload. The Boc protecting group can be removed with acid, revealing a primary amine that serves for coupling reactions to form an amide. The Val-Cit-PAB segment is cleaved by cellular proteases, facilitating the effective release of the payload inside the cell.
Targets(IC50)	ADC Linker

Preparing Stock Solutions

	1mg	5mg	10mg
1 mM	1.5656 mL	7.8278 mL	15.6556 mL
5 mM	0.3131 mL	1.5656 mL	3.1311 mL
10 mM	0.1566 mL	0.7828 mL	1.5656 mL
50 mM	0.0313 mL	0.1566 mL	0.3131 mL

Please select the appropriate solvent to prepare the stock solution, according to the solubility of the product in different solvents. Please use it as soon as possible.

Note: The dilution table applies only to solid products. For liquid products, please calculate the stock solution based on the stated concentration and/or density.

Inhibitor · Natural Compounds · Compound Libraries · Recombinant Proteins

This product is for Research Use Only · Not for Human or Veterinary or Therapeutic Use

Tel:781-999-4286 E_mail:info@targetmol.com Address:34 Washington Street,Wellesley Hills,MA 02481