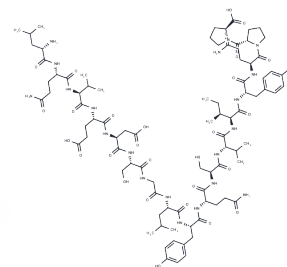


LP17 (human)

Chemical Properties

CAS No. :	887973-05-9
Formula:	C88H134N20O28S
Molecular Weight:	1952.19
Storage:	Keep away from moisture Powder: -20°C for 3 years In solvent: -80°C for 1 year <small>Actual storage temperature shall be subject to the COA.</small>



Biological Description

Description	LP17 (human) is a TREM1 antagonist peptide with anti-inflammatory and anticancer properties.
Targets(IC50)	Others

Preparing Stock Solutions

	1mg	5mg	10mg
1 mM	0.5122 mL	2.5612 mL	5.1225 mL
5 mM	0.1024 mL	0.5122 mL	1.0245 mL
10 mM	0.0512 mL	0.2561 mL	0.5122 mL
50 mM	0.0102 mL	0.0512 mL	0.1024 mL

Please select the appropriate solvent to prepare the stock solution, according to the solubility of the product in different solvents. Please use it as soon as possible.

Note: The dilution table applies only to solid products. For liquid products, please calculate the stock solution based on the stated concentration and/or density.

Inhibitor · Natural Compounds · Compound Libraries · Recombinant Proteins

This product is for Research Use Only · Not for Human or Veterinary or Therapeutic Use

Tel: 781-999-4286 E_mail: info@targetmol.com Address: 34 Washington Street, Wellesley Hills, MA 02481