

## Thalidomide-5-(C6-amine)

## Chemical Properties

CAS No. : 1950635-17-2

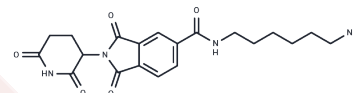
Formula: C<sub>20</sub>H<sub>24</sub>N<sub>4</sub>O<sub>5</sub>

Molecular Weight: 400.428

Keep away from direct sunlight

Storage: Powder: -20°C for 3 years | In solvent: -80°C for 1 year

Actual storage temperature shall be subject to the COA.



## Biological Description

Description	Thalidomide-5-(C6-amine) is a component of a PROTAC, featuring an E3 ligase ligand substituted with a terminal amine group. This amine group can react with NHS ester groups or carboxylic acids in the presence of either EDC or HATU.
Targets(IC50)	Ligands for E3 Ligase

## Preparing Stock Solutions

	1mg	5mg	10mg
1 mM	2.4973 mL	12.4866 mL	24.9732 mL
5 mM	0.4995 mL	2.4973 mL	4.9946 mL
10 mM	0.2497 mL	1.2487 mL	2.4973 mL
50 mM	0.0499 mL	0.2497 mL	0.4995 mL

Please select the appropriate solvent to prepare the stock solution, according to the solubility of the product in different solvents. Please use it as soon as possible.

Note: The dilution table applies only to solid products. For liquid products, please calculate the stock solution based on the stated concentration and/or density.

Inhibitor · Natural Compounds · Compound Libraries · Recombinant Proteins

This product is for Research Use Only · Not for Human or Veterinary or Therapeutic Use

Tel: 781-999-4286 E\_mail: info@targetmol.com Address: 34 Washington Street, Wellesley Hills, MA 02481