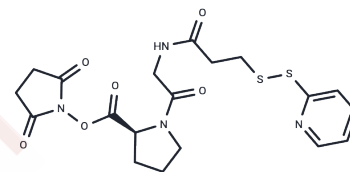


## SPDP-Gly-Pro-NHS ester

### Chemical Properties

CAS No. : 2655501-79-2  
 Formula: C<sub>19</sub>H<sub>22</sub>N<sub>4</sub>O<sub>6</sub>S<sub>2</sub>  
 Molecular Weight: 466.531  
 Storage: Powder: -20°C for 3 years | In solvent: -80°C for 1 year  
*Actual storage temperature shall be subject to the COA.*



### Biological Description

Description	SPDP-Gly-Pro-NHS ester is a linker compound featuring SPDP and NHS ester components. SPDP acts as a crosslinker for amines and thiols while also possessing membrane permeability, enabling participation in intracellular crosslinking reactions. The NHS ester reacts with amines to form stable amide bonds.
-------------	---

### Preparing Stock Solutions

	1mg	5mg	10mg
1 mM	2.1435 mL	10.7174 mL	21.4348 mL
5 mM	0.4287 mL	2.1435 mL	4.287 mL
10 mM	0.2143 mL	1.0717 mL	2.1435 mL
50 mM	0.0429 mL	0.2143 mL	0.4287 mL

Please select the appropriate solvent to prepare the stock solution, according to the solubility of the product in different solvents. Please use it as soon as possible.

Note: The dilution table applies only to solid products. For liquid products, please calculate the stock solution based on the stated concentration and/or density.

**Inhibitor · Natural Compounds · Compound Libraries · Recombinant Proteins**

This product is for Research Use Only · Not for Human or Veterinary or Therapeutic Use

Tel:781-999-4286 E\_mail:info@targetmol.com Address:34 Washington Street,Wellesley Hills,MA 02481