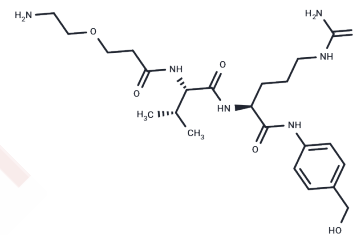


## NH2-PEG1-Val-Cit-PAB-OH

### Chemical Properties

CAS No. :	2055024-63-8
Formula:	C <sub>23</sub> H <sub>38</sub> N <sub>6</sub> O <sub>6</sub>
Molecular Weight:	494.584
Storage:	Powder: -20°C for 3 years   In solvent: -80°C for 1 year <small>Actual storage temperature shall be subject to the COA.</small>



### Biological Description

Description	NH <sub>2</sub> -PEG1-Val-Cit-PAB-OH is a cleavable ADC linker with a primary amine, a hydrophilic PEG spacer, a Val-Cit dipeptide, and a PAB group. The benzyl alcohol on the PAB group facilitates conjugation reactions with groups like PNP for binding drug payloads. The primary amine is versatile in participating in reactions such as coupling with carboxylic acids, reductive amination with ketones or aldehydes, and more specialized applications like SNAr reactions or heterocyclic chemistry. The Val-Cit dipeptide is cleaved by intracellular proteases, allowing efficient payload delivery through an elimination mechanism within the PAB structure.
Targets(IC50)	ADC Linker

### Preparing Stock Solutions

	1mg	5mg	10mg
1 mM	2.0219 mL	10.1096 mL	20.2192 mL
5 mM	0.4044 mL	2.0219 mL	4.0438 mL
10 mM	0.2022 mL	1.011 mL	2.0219 mL
50 mM	0.0404 mL	0.2022 mL	0.4044 mL

Please select the appropriate solvent to prepare the stock solution, according to the solubility of the product in different solvents. Please use it as soon as possible.

Note: The dilution table applies only to solid products. For liquid products, please calculate the stock solution based on the stated concentration and/or density.

**Inhibitor · Natural Compounds · Compound Libraries · Recombinant Proteins**

This product is for Research Use Only · Not for Human or Veterinary or Therapeutic Use

Tel:781-999-4286 E\_mail:info@targetmol.com Address:34 Washington Street,Wellesley Hills,MA 02481