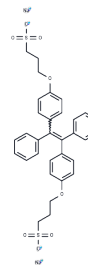


(E/Z)-BSPOTPE

Chemical Properties

CAS No. :	2046513-40-8
Formula:	C32H30Na2O8S2
Molecular Weight:	652.685
Storage:	Powder: -20°C for 3 years In solvent: -80°C for 1 year Actual storage temperature shall be subject to the COA.



Biological Description

Description	(E/Z)-BSPOTPE is a configurational mixture of BSPOTPE. BSPOTPE can bind to human serum albumin (HSA) and exhibits aggregation-induced emission (AIE) properties.
-------------	--

Preparing Stock Solutions

	1mg	5mg	10mg
1 mM	1.5321 mL	7.6606 mL	15.3212 mL
5 mM	0.3064 mL	1.5321 mL	3.0642 mL
10 mM	0.1532 mL	0.7661 mL	1.5321 mL
50 mM	0.0306 mL	0.1532 mL	0.3064 mL

Please select the appropriate solvent to prepare the stock solution, according to the solubility of the product in different solvents. Please use it as soon as possible.

Note: The dilution table applies only to solid products. For liquid products, please calculate the stock solution based on the stated concentration and/or density.

Inhibitor · Natural Compounds · Compound Libraries · Recombinant Proteins

This product is for Research Use Only · Not for Human or Veterinary or Therapeutic Use

Tel:781-999-4286 E_mail:info@targetmol.com Address:34 Washington Street,Wellesley Hills,MA 02481