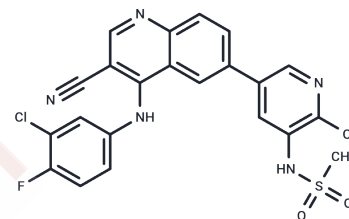


MTX-216

## Chemical Properties

CAS No. : 1952236-19-9  
 Formula: C<sub>22</sub>H<sub>14</sub>Cl<sub>2</sub>FN<sub>5</sub>O<sub>2</sub>S  
 Molecular Weight: 502.348  
 Storage: Powder: -20°C for 3 years | In solvent: -80°C for 1 year  
 Actual storage temperature shall be subject to the COA.



## Biological Description

|                            |  |
|----------------------------|--|
| Description                | MTX-216 is an ATP-competitive inhibitor targeting both PI3K and EGFR. It simultaneously inhibits Ki-67 and ribosomal S6 phosphorylation, inducing apoptosis in NF1LOF cells. Additionally, MTX-216 suppresses SYK kinase activity with an IC <sub>50</sub> of 281 nM. This compound is applicable for melanoma research. |
| Targets(IC <sub>50</sub> ) | Apoptosis,EGFR,Syk,PI3K  |
| In vitro                   | MTX-216 exhibits strong inhibitory effects on the growth of NF1 LOF melanoma both in vitro and in vivo. Additionally, MTX-216 suppresses the expression of a group of genes that regulate the mitochondrial electron transport chain.  |
| In vivo                    | MTX-216 (50 mg/kg, administered every other day from days 11 to 20, in mice transplanted with COLO792 and WM3918 cells) inhibits tumor growth.   |

## Preparing Stock Solutions

|       | 1mg       | 5mg       | 10mg       |
|-------|-----------|-----------|------------|
| 1 mM  | 1.9906 mL | 9.9532 mL | 19.9064 mL |
| 5 mM  | 0.3981 mL | 1.9906 mL | 3.9813 mL  |
| 10 mM | 0.1991 mL | 0.9953 mL | 1.9906 mL  |
| 50 mM | 0.0398 mL | 0.1991 mL | 0.3981 mL  |

Please select the appropriate solvent to prepare the stock solution, according to the solubility of the product in different solvents. Please use it as soon as possible.

Note: The dilution table applies only to solid products. For liquid products, please calculate the stock solution based on the stated concentration and/or density.

Inhibitor · Natural Compounds · Compound Libraries · Recombinant Proteins

This product is for Research Use Only· Not for Human or Veterinary or Therapeutic Use

Tel:781-999-4286 E\_mail:info@targetmol.com Address:34 Washington Street,Wellesley Hills,MA 02481