

MH42

Chemical Properties

CAS No. : 2950154-05-7

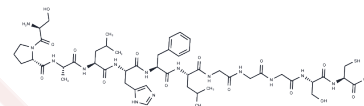
Formula: C₅₀H₇₆N₁₄O₁₅S

Molecular Weight: 1145.29

Keep away from moisture

Storage: Powder: -20°C for 3 years | In solvent: -80°C for 1 year

Actual storage temperature shall be subject to the COA.



Biological Description

Description	MH42 is a peptide with high binding affinity for RPE cells.
Targets(IC50)	Others

Preparing Stock Solutions

	1mg	5mg	10mg
1 mM	0.8731 mL	4.3657 mL	8.7314 mL
5 mM	0.1746 mL	0.8731 mL	1.7463 mL
10 mM	0.0873 mL	0.4366 mL	0.8731 mL
50 mM	0.0175 mL	0.0873 mL	0.1746 mL

Please select the appropriate solvent to prepare the stock solution, according to the solubility of the product in different solvents. Please use it as soon as possible.

Note: The dilution table applies only to solid products. For liquid products, please calculate the stock solution based on the stated concentration and/or density.

Inhibitor · Natural Compounds · Compound Libraries · Recombinant Proteins

This product is for Research Use Only · Not for Human or Veterinary or Therapeutic Use

Tel: 781-999-4286

E_mail: info@targetmol.com

Address: 34 Washington Street, Wellesley Hills, MA 02481