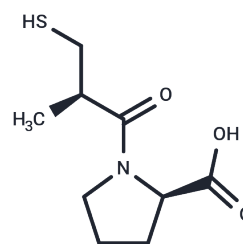


epi-D-Captopril

Chemical Properties

CAS No. :	112243-88-6
Formula:	C ₉ H ₁₅ NO ₃ S
Molecular Weight:	217.285
Storage:	Powder: -20°C for 3 years In solvent: -80°C for 1 year Actual storage temperature shall be subject to the COA.



Biological Description

Description	epi-D-Captopril (epi-D-SQ 14225) is a stereoisomer of Captopril and functions as an inhibitor of metallo-beta-lactamases (MBLs). The IC ₅₀ values of epi-D-Captopril for NDM-1, IMP-1, and VIM-2 are 64 μM, 173 μM, and 5.5 μM, respectively. This compound holds potential for research in MBLs-related antibiotic-resistant infections.
Targets(IC ₅₀)	Antibacterial, Beta-lactamase

Preparing Stock Solutions

	1mg	5mg	10mg
1 mM	4.6021 mL	23.0107 mL	46.0214 mL
5 mM	0.9204 mL	4.6021 mL	9.2043 mL
10 mM	0.4602 mL	2.3011 mL	4.6021 mL
50 mM	0.092 mL	0.4602 mL	0.9204 mL

Please select the appropriate solvent to prepare the stock solution, according to the solubility of the product in different solvents. Please use it as soon as possible.

Note: The dilution table applies only to solid products. For liquid products, please calculate the stock solution based on the stated concentration and/or density.

Inhibitor · Natural Compounds · Compound Libraries · Recombinant Proteins

This product is for Research Use Only · Not for Human or Veterinary or Therapeutic Use

Tel: 781-999-4286 E_mail: info@targetmol.com Address: 34 Washington Street, Wellesley Hills, MA 02481