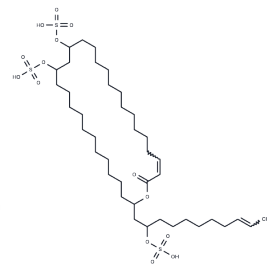


Izumenolide

Chemical Properties

CAS No. :	76265-39-9
Formula:	C ₄₀ H ₇₄ O ₁₄ S ₃
Molecular Weight:	875.202
Storage:	Powder: -20°C for 3 years In solvent: -80°C for 1 year Actual storage temperature shall be subject to the COA.



Biological Description

Description	Izumenolide exhibits inhibitory effects on certain β -lactamases, with an IC ₅₀ concentration of 0.01 μ g/mL specifically for TEM-2 β -lactamase.
Targets(IC ₅₀)	Antibacterial,Antibiotic,Beta-lactamase

Preparing Stock Solutions

	1mg	5mg	10mg
1 mM	1.1426 mL	5.713 mL	11.426 mL
5 mM	0.2285 mL	1.1426 mL	2.2852 mL
10 mM	0.1143 mL	0.5713 mL	1.1426 mL
50 mM	0.0229 mL	0.1143 mL	0.2285 mL

Please select the appropriate solvent to prepare the stock solution, according to the solubility of the product in different solvents. Please use it as soon as possible.

Note: The dilution table applies only to solid products. For liquid products, please calculate the stock solution based on the stated concentration and/or density.

Inhibitor · Natural Compounds · Compound Libraries · Recombinant Proteins

This product is for Research Use Only · Not for Human or Veterinary or Therapeutic Use

Tel:781-999-4286 E_mail:info@targetmol.com Address:34 Washington Street,Wellesley Hills,MA 02481