

SPDP-Gly-Pro-acid

Chemical Properties

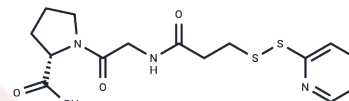
CAS No. : 2655501-78-1

Formula: C15H19N3O4S2

Molecular Weight: 369.459

Storage: Powder: -20°C for 3 years | In solvent: -80°C for 1 year

Actual storage temperature shall be subject to the COA.



Biological Description

Description	SPDP-Gly-Pro-acid is a linker molecule featuring both SPDP and carboxylic acid components. SPDP acts as a crosslinking agent that reacts with amines and thiols. Additionally, it possesses membrane permeability, enabling it to participate in intracellular crosslinking reactions. The terminal carboxylic acid can react with primary amine groups to form stable amide bonds in the presence of activators (such as EDC or HATU).
-------------	---

Preparing Stock Solutions

	1mg	5mg	10mg
1 mM	2.7067 mL	13.5333 mL	27.0665 mL
5 mM	0.5413 mL	2.7067 mL	5.4133 mL
10 mM	0.2707 mL	1.3533 mL	2.7067 mL
50 mM	0.0541 mL	0.2707 mL	0.5413 mL

Please select the appropriate solvent to prepare the stock solution, according to the solubility of the product in different solvents. Please use it as soon as possible.

Note: The dilution table applies only to solid products. For liquid products, please calculate the stock solution based on the stated concentration and/or density.

Inhibitor · Natural Compounds · Compound Libraries · Recombinant Proteins

This product is for Research Use Only · Not for Human or Veterinary or Therapeutic Use

Tel: 781-999-4286 E_mail: info@targetmol.com Address: 34 Washington Street, Wellesley Hills, MA 02481