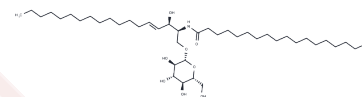


## GlcCer (d18:1/18:0)

## Chemical Properties

CAS No. :	95119-86-1
Formula:	C42H81NO8
Molecular Weight:	728.094
Storage:	Powder: -20°C for 3 years   In solvent: -80°C for 1 year Actual storage temperature shall be subject to the COA.



## Biological Description

Description	GlcCer (d18:1/18:0) (C18 Glucosyl( $\beta$ ) ceramide (d18:1/18:0)) is a sphingolipid with potential applications in research on Parkinson's disease and Lewy body dementia.
Targets(IC50)	Liposome

## Preparing Stock Solutions

	1mg	5mg	10mg
1 mM	1.3735 mL	6.8673 mL	13.7346 mL
5 mM	0.2747 mL	1.3735 mL	2.7469 mL
10 mM	0.1373 mL	0.6867 mL	1.3735 mL
50 mM	0.0275 mL	0.1373 mL	0.2747 mL

Please select the appropriate solvent to prepare the stock solution, according to the solubility of the product in different solvents. Please use it as soon as possible.

Note: The dilution table applies only to solid products. For liquid products, please calculate the stock solution based on the stated concentration and/or density.

Inhibitor · Natural Compounds · Compound Libraries · Recombinant Proteins

This product is for Research Use Only · Not for Human or Veterinary or Therapeutic Use

Tel:781-999-4286 E\_mail:info@targetmol.com Address:34 Washington Street,Wellesley Hills,MA 02481