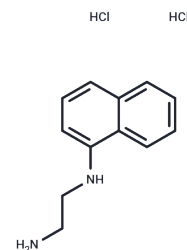


## N-(1-naphthyl)ethylenediaminedihydrochloride

## Chemical Properties

CAS No. :	1465-25-4
Formula:	C <sub>12</sub> H <sub>16</sub> Cl <sub>2</sub> N <sub>2</sub>
Molecular Weight:	259.175
Storage:	Keep away from direct sunlight Powder: -20°C for 3 years   In solvent: -80°C for 1 year <small>Actual storage temperature shall be subject to the COA.</small>



## Biological Description

Description	N-(1-naphthyl)ethylenediamine dihydrochloride is often used as a coupling agent for the spectrophotometric detection of aminophenols, phenylenediamines, dinitroanilines, chloroanilines, thiols and sulfonamides. The solution of N-(1-naphthyl)ethylenediamine dihydrochloride dissolved in sulfuric acid-methanol can be applied to the quantitative determination of sugars.
-------------	--

## Preparing Stock Solutions

	1mg	5mg	10mg
1 mM	3.8583 mL	19.2916 mL	38.5832 mL
5 mM	0.7717 mL	3.8583 mL	7.7166 mL
10 mM	0.3858 mL	1.9292 mL	3.8583 mL
50 mM	0.0772 mL	0.3858 mL	0.7717 mL

Please select the appropriate solvent to prepare the stock solution, according to the solubility of the product in different solvents. Please use it as soon as possible.

Note: The dilution table applies only to solid products. For liquid products, please calculate the stock solution based on the stated concentration and/or density.

Inhibitor · Natural Compounds · Compound Libraries · Recombinant Proteins

This product is for Research Use Only · Not for Human or Veterinary or Therapeutic Use

Tel: 781-999-4286 E\_mail: info@targetmol.com Address: 34 Washington Street, Wellesley Hills, MA 02481