

L 858051

Chemical Properties

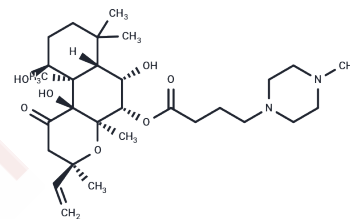
CAS No. : 110452-75-0

Formula: C₂₉H₄₈N₂O₇

Molecular Weight: 536.7

Storage: Powder: -20°C for 3 years | In solvent: -80°C for 1 year

Actual storage temperature shall be subject to the COA.



Biological Description

Description	L 858051 activates adenylate cyclase. It also inhibits glucose transport in rat adipocytes.
Targets(IC50)	Others,AChR

Preparing Stock Solutions

	1mg	5mg	10mg
1 mM	1.8632 mL	9.3162 mL	18.6324 mL
5 mM	0.3726 mL	1.8632 mL	3.7265 mL
10 mM	0.1863 mL	0.9316 mL	1.8632 mL
50 mM	0.0373 mL	0.1863 mL	0.3726 mL

Please select the appropriate solvent to prepare the stock solution, according to the solubility of the product in different solvents. Please use it as soon as possible.

Note: The dilution table applies only to solid products. For liquid products, please calculate the stock solution based on the stated concentration and/or density.

Reference

Belacel-Ouari M, Zhang L, Hubert F, Assaly R, Gerbier R, Jockers R, Dauphin F, Lechêne P, Fischmeister R, Manoury B, Leblais V. Influence of cell confluence on the cAMP signalling pathway in vascular smooth muscle cells. *Cell Signal*. 2017 Jul;35:118-128. doi: 10.1016/j.cellsig.2017.03.025. Epub 2017 Apr 4. PubMed PMID: 28389413.

Haj Slimane Z, Bedioune I, Lechêne P, Varin A, Lefebvre F, Mateo P, Domergue-Dupont V, Dewenter M, Richter W, Conti M, El-Armouche A, Zhang J, Fischmeister R, Vandecasteele G. Control of cytoplasmic and nuclear protein kinase A by phosphodiesterases and phosphatases in cardiac myocytes. *Cardiovasc Res*. 2014 Apr 1;102(1):97-106. doi: 10.1093/cvr/cvu029. Epub 2014 Feb 18. PubMed PMID: 24550350; PubMed Central PMCID: PMC3958623.

Funaki C, Hodges RR, Dartt DA. Role of cAMP inhibition of p44/p42 mitogen-activated protein kinase in potentiation of protein secretion in rat lacrimal gland. *Am J Physiol Cell Physiol*. 2007 Nov;293(5):C1551-60. Epub 2007 Aug 8. PubMed PMID: 17687004.

Rochais F, Vandecasteele G, Lefebvre F, Lugnier C, Lum H, Mazet JL, Cooper DM, Fischmeister R. Negative feedback exerted by cAMP-dependent protein kinase and cAMP phosphodiesterase on subsarcolemmal cAMP signals in intact cardiac myocytes: an in vivo study using adenovirus-mediated expression of CNG channels. *J Biol Chem*. 2004 Dec 10;279(50):52095-105. Epub 2004 Oct 1. PubMed PMID: 15466415.

Inhibitor · Natural Compounds · Compound Libraries · Recombinant Proteins

This product is for Research Use Only · Not for Human or Veterinary or Therapeutic Use

Tel:781-999-4286 E_mail:info@targetmol.com Address:34 Washington Street,Wellesley Hills,MA 02481