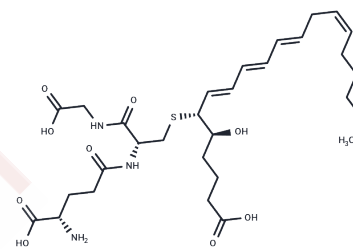


## 11-trans Leukotriene C4

## Chemical Properties

CAS No. :	74841-69-3
Formula:	C <sub>30</sub> H <sub>47</sub> N <sub>3</sub> O <sub>9</sub> S
Molecular Weight:	625.78
Storage:	Powder: -20°C for 3 years   In solvent: -80°C for 1 year Actual storage temperature shall be subject to the COA.



## Biological Description

Description	11-trans Leukotriene C4 (11-trans LTC4) is a C-11 double bond isomer of LTC4. LTC4 undergoes slow temperature-dependent isomerization to 11-trans LTC4 during storage. 11-trans LTC4 is produced in smaller amounts relative to LTC4 in ionophore-stimulated HMC-1 cells (a human mast cell line) and equine eosinophils, but not in human neutrophils or RBL-1 cells. It is nearly equipotent with LTC4 for contraction of guinea pig parenchymal and ileum. In a radioligand binding assay using guinea pig ileum as a cysteinyl leukotriene receptor preparation, the pK <sub>i</sub> s for LTC4 and 11-trans LTC4 were determined to be 6.42 and 6.58, respectively.
Targets(IC50)	Others,Endogenous Metabolite

## Solubility Information

Solubility	DMSO: >50 mg/mL (per Ramki Iyer),Sonication is recommended. PBS (pH 7.2): >100 µg/mL (per Ramki Iyer),Sonication is recommended. Ethanol: >50 mg/mL (per Ramki Iyer),Sonication is recommended. DMF: >50 mg/mL (per Ramki Iyer),Sonication is recommended. (< 1 mg/ml refers to the product slightly soluble or insoluble)
------------	--

### Preparing Stock Solutions

---

	<b>1mg</b>	<b>5mg</b>	<b>10mg</b>
1 mM	1.598 mL	7.990 mL	15.9801 mL
5 mM	0.3196 mL	1.598 mL	3.196 mL
10 mM	0.1598 mL	0.799 mL	1.598 mL
50 mM	0.032 mL	0.1598 mL	0.3196 mL

---

Please select the appropriate solvent to prepare the stock solution, according to the solubility of the product in different solvents. Please use it as soon as possible.

Note: The dilution table applies only to solid products. For liquid products, please calculate the stock solution based on the stated concentration and/or density.

**Inhibitor · Natural Compounds · Compound Libraries · Recombinant Proteins**

This product is for Research Use Only · Not for Human or Veterinary or Therapeutic Use

Tel:781-999-4286 E\_mail:info@targetmol.com Address:34 Washington Street,Wellesley Hills,MA 02481