

(±)19(20)-EDP Ethanolamide**Chemical Properties**

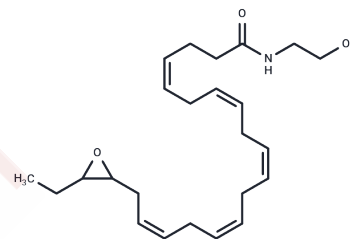
CAS No. : 2123485-34-5

Formula: C₂₄H₃₇NO₃

Molecular Weight: 387.564

Storage: Powder: -20°C for 3 years | In solvent: -80°C for 1 year

Actual storage temperature shall be subject to the COA.

**Biological Description**

Description	(±)19(20)-EDP ethanolamide is an ω-3 endocannabinoid epoxide and cannabinoid (CB) receptor agonist (EC ₅₀ s = 108 and 280 nM for CB1 and CB2, respectively). It is produced through direct epoxygenation of docosahexaenoyl ethanolamide by cytochrome P450 (CYP) epoxygenases. (±)19(20)-EDP ethanolamide (25 μM) reduces the viability of 143B metastatic osteosarcoma cells. It decreases the production of IL-6 and increases the production of IL-10 when used at concentrations ranging from 2.5 to 10 μM in BV-2 microglia stimulated by LPS and decreases LPS-induced cytotoxicity when used at concentrations ranging from 5 to 10 μM. It also decreases nitrite production when used at a concentration of 7.5 μM, an effect that can be partially reversed by the CB2 receptor antagonist AM630 and the PPARγ antagonist GW 9662. (±)19(20)-EDP ethanolamide induces vasodilation of isolated precontracted bovine coronary arteries (ED ₅₀ = 1.9 μM) and reduces tube formation by human microvascular endothelial cells (HMVECs) in a Matrigel assay.
Targets(IC50)	Others, Interleukin

Solubility Information

Solubility	DMF: 50 mg/mL (129.01 mM), Sonication is recommended. Ethanol:PBS(pH 7.2) (1:1): 0.5 mg/mL (1.29 mM), Sonication is recommended. DMSO: 50 mg/mL (129.01 mM), Sonication is recommended. Ethanol: 50 mg/mL (129.01 mM), Sonication is recommended. (< 1 mg/ml refers to the product slightly soluble or insoluble)
------------	--

Preparing Stock Solutions

	1mg	5mg	10mg
1 mM	2.5802 mL	12.9012 mL	25.8025 mL
5 mM	0.516 mL	2.5802 mL	5.1605 mL
10 mM	0.258 mL	1.2901 mL	2.5802 mL
50 mM	0.0516 mL	0.258 mL	0.516 mL

Please select the appropriate solvent to prepare the stock solution, according to the solubility of the product in different solvents. Please use it as soon as possible.

Note: The dilution table applies only to solid products. For liquid products, please calculate the stock solution based on the stated concentration and/or density.

Inhibitor · Natural Compounds · Compound Libraries · Recombinant Proteins

This product is for Research Use Only · Not for Human or Veterinary or Therapeutic Use

Tel:781-999-4286 E_mail:info@targetmol.com Address:34 Washington Street,Wellesley Hills,MA 02481