

(1S,3R,5R)-PIM447 dihydrochloride

Chemical Properties

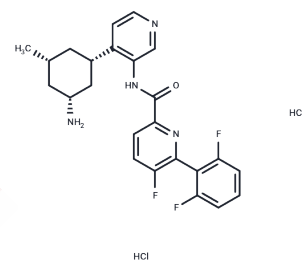
CAS No. :

Formula: C₂₄H₂₅Cl₂F₃N₄O

Molecular Weight: 513.38

Storage: Powder: -20°C for 3 years | In solvent: -80°C for 1 year

Actual storage temperature shall be subject to the COA.



Biological Description

| | |
|----------------------------|--|
| Description | (1S,3R,5R)-PIM447 (dihydrochloride) is an inhibitor of PIM with IC ₅₀ values of 0.095 μ M for Pim1, 0.522 μ M for Pim2, and 0.369 μ M for Pim3. |
| Targets(IC ₅₀) | CDK,Pim |

Solubility Information

| | |
|---------------------|---|
| Solubility | DMSO: 33.33 mg/mL (64.92 mM),Sonication is recommended. (< 1 mg/ml refers to the product slightly soluble or insoluble) |
| In vivo Formulation | 10% DMSO+40% PEG300+5% Tween-80+45% Saline: 2 mg/mL (3.9 mM),Sonication is recommended. <i>Please add the solvents sequentially, clarifying the solution as much as possible before adding the next one. Dissolve by heating and/or sonication if necessary. Working solution is recommended to be prepared and used immediately. The formulation provided above is for reference purposes only. In vivo formulations may vary and should be modified based on specific experimental conditions.</i> |

Preparing Stock Solutions

| | 1mg | 5mg | 10mg |
|-------|-----------|-----------|------------|
| 1 mM | 1.9479 mL | 9.7394 mL | 19.4787 mL |
| 5 mM | 0.3896 mL | 1.9479 mL | 3.8957 mL |
| 10 mM | 0.1948 mL | 0.9739 mL | 1.9479 mL |
| 50 mM | 0.039 mL | 0.1948 mL | 0.3896 mL |

Please select the appropriate solvent to prepare the stock solution, according to the solubility of the product in different solvents. Please use it as soon as possible.

Note: The dilution table applies only to solid products. For liquid products, please calculate the stock solution based on the stated concentration and/or density.

Inhibitor · Natural Compounds · Compound Libraries · Recombinant Proteins

This product is for Research Use Only · Not for Human or Veterinary or Therapeutic Use

Tel:781-999-4286 E_mail:info@targetmol.com Address:34 Washington Street,Wellesley Hills,MA 02481