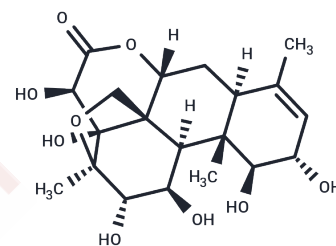


## Bruceine E

## Chemical Properties

CAS No. :	21586-90-3
Formula:	C <sub>20</sub> H <sub>28</sub> O <sub>9</sub>
Molecular Weight:	412.43
Storage:	Powder: -20°C for 3 years   In solvent: -80°C for 1 year Actual storage temperature shall be subject to the COA.



## Biological Description

Description	Bruceine E is isolated from <i>B. javanica</i> seeds with hypoglycemia effects. Bruceine E can be used for studies about acting as an insulin secretagogue.
Targets(IC50)	Others
In vitro	Bruceine E exhibits significant blood glucose concentration reduction activity[1].
In vivo	Bruceine E (1 mg/kg b.w.) exhibits blood glucose lowering effect in both nondiabetic mice and Streptozotocin (STZ)-induced diabetic rats at lower dose[3].

## Solubility Information

Solubility	DMSO: 145 mg/mL (351.57 mM), Sonication is recommended. (< 1 mg/ml refers to the product slightly soluble or insoluble)
------------	--

## Preparing Stock Solutions

	1mg	5mg	10mg
1 mM	2.4247 mL	12.1233 mL	24.2465 mL
5 mM	0.4849 mL	2.4247 mL	4.8493 mL
10 mM	0.2425 mL	1.2123 mL	2.4247 mL
50 mM	0.0485 mL	0.2425 mL	0.4849 mL

Please select the appropriate solvent to prepare the stock solution, according to the solubility of the product in different solvents. Please use it as soon as possible.

Note: The dilution table applies only to solid products. For liquid products, please calculate the stock solution based on the stated concentration and/or density.

Reference

Liu JQ, et al. One new pregnane glycoside from the seeds of cultivated *Brucea javanica*. *Arch Pharm Res.* 2011 Aug; 34(8):1297-300.

Man F, et al. HPLC-MS/MS method for bioavailability study of bruceines D & E in rat plasma. *J Chromatogr B Analyt Technol Biomed Life Sci.* 2017 Sep 15;1063:183-188.

Ablat A, et al. Antidiabetic effects of *Brucea javanica* seeds in type 2 diabetic rats. *BMC Complement Altern Med.* 2017;17(1):94. Published 2017 Feb 6.

**Inhibitor · Natural Compounds · Compound Libraries · Recombinant Proteins**

This product is for Research Use Only · Not for Human or Veterinary or Therapeutic Use

Tel:781-999-4286 E\_mail:info@targetmol.com Address:34 Washington Street,Wellesley Hills,MA 02481