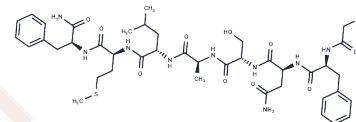


## Salmfamide 1

## Chemical Properties

CAS No. :	134439-73-9
Formula:	C <sub>41</sub> H <sub>60</sub> N <sub>10</sub> O <sub>10</sub> S
Molecular Weight:	885.04
Storage:	Keep away from moisture Powder: -20°C for 3 years   In solvent: -80°C for 1 year <small>Actual storage temperature shall be subject to the COA.</small>



## Biological Description

Description	Salmfamide 1 is a neuropeptide.
-------------	---------------------------------

## Preparing Stock Solutions

	1mg	5mg	10mg
1 mM	1.1299 mL	5.6495 mL	11.2989 mL
5 mM	0.226 mL	1.1299 mL	2.2598 mL
10 mM	0.113 mL	0.5649 mL	1.1299 mL
50 mM	0.0226 mL	0.113 mL	0.226 mL

Please select the appropriate solvent to prepare the stock solution, according to the solubility of the product in different solvents. Please use it as soon as possible.

Note: The dilution table applies only to solid products. For liquid products, please calculate the stock solution based on the stated concentration and/or density.

## Reference

- Elphick MR, Reeve JR Jr, Burke RD, Thorndyke MC. Isolation of the neuropeptide SALMFamide-1 from starfish using a new antiserum. *Peptides*. 1991 May-Jun;12(3):455-9. PubMed PMID: 1923925.
- Mita M, Oka H, Thorndyke MC, Shibata Y, Yoshikuni M, Nagahama Y. Inhibitory effect of a SALMFamide neuropeptide on secretion of gonad-stimulating substance from radial nerves in the starfish *Asterina pectinifera*. *Zoolog Sci*. 2004 Mar;21(3):299-303. PubMed PMID: 15056924.
- Otara CB, Jones CE, Younan ND, Viles JH, Elphick MR. Structural analysis of the starfish SALMFamide neuropeptides S1 and S2: the N-terminal region of S2 facilitates self-association. *Biochim Biophys Acta*. 2014 Feb;1844(2):358-65. doi: 10.1016/j.bbapap.2013.10.013. Epub 2013 Nov 5. PubMed PMID: 24200677.
- Moore SJ, Thorndyke MC. Immunocytochemical mapping of the novel echinoderm neuropeptide SALMFamide 1 (S1) in the starfish *Asterias rubens*. *Cell Tissue Res*. 1993 Dec;274(3):605-18. PubMed PMID: 8293452.

**Inhibitor · Natural Compounds · Compound Libraries · Recombinant Proteins**

This product is for Research Use Only · Not for Human or Veterinary or Therapeutic Use

Tel:781-999-4286 E\_mail:info@targetmol.com Address:34 Washington Street,Wellesley Hills,MA 02481