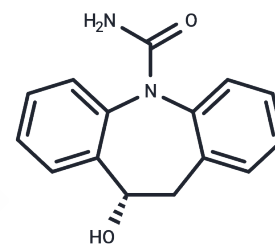


## Eslicarbazepine

## Chemical Properties

CAS No. :	104746-04-5
Formula:	C <sub>15</sub> H <sub>14</sub> N <sub>2</sub> O <sub>2</sub>
Molecular Weight:	254.28
Storage:	Powder: -20°C for 3 years   In solvent: -80°C for 1 year <small>Actual storage temperature shall be subject to the COA.</small>



## Biological Description

Description	Eslicarbazepine (Stedesa) can be used for adjunctive therapy for adults with partial-onset seizures.
Targets(IC50)	Beta-Secretase,Sodium Channel
In vitro	Eslicarbazepine is an anti-epileptic drug, chemically related to carbamazepine but with a more favorable safety profile. Eslicarbazepine acetate is a prodrug for eslicarbazepine (S-licarbazepine), which is a dual Inhibitor of $\beta$ -Secretase and voltage-gated sodium channel[1][2].

## Solubility Information

Solubility	DMSO: 250 mg/mL (983.17 mM),Sonication is recommended. (< 1 mg/ml refers to the product slightly soluble or insoluble)
In vivo Formulation	10% DMSO+40% PEG300+5% Tween 80+45% Saline: 2 mg/mL (7.87 mM),Sonication is recommended. <i>Please add the solvents sequentially, clarifying the solution as much as possible before adding the next one. Dissolve by heating and/or sonication if necessary. Working solution is recommended to be prepared and used immediately. The formulation provided above is for reference purposes only. In vivo formulations may vary and should be modified based on specific experimental conditions.</i>

## Preparing Stock Solutions

	<b>1mg</b>	<b>5mg</b>	<b>10mg</b>
1 mM	3.9327 mL	19.6634 mL	39.3267 mL
5 mM	0.7865 mL	3.9327 mL	7.8653 mL
10 mM	0.3933 mL	1.9663 mL	3.9327 mL
50 mM	0.0787 mL	0.3933 mL	0.7865 mL

Please select the appropriate solvent to prepare the stock solution, according to the solubility of the product in different solvents. Please use it as soon as possible.

Note: The dilution table applies only to solid products. For liquid products, please calculate the stock solution based on the stated concentration and/or density.

## Reference

Doeser A, Soares-da-Silva P, Beck H, Uebachs M. The effects of eslicarbazepine on persistent Na<sup>+</sup> current and the role of the Na<sup>+</sup> channel  $\beta$  subunits. *Epilepsy Res.* 2014 Feb;108(2):202-11. doi: 10.1016/j.eplepsyres.2013.11.022. Epub 2013 Dec 8. PubMed PMID: 24368131.

Keating GM. Eslicarbazepine acetate: a review of its use as adjunctive therapy in refractory partial-onset seizures. *CNS Drugs.* 2014 Jul;28(7):583-600. doi: 10.1007/s40263-014-0182-2. Review. PubMed PMID: 24972948.

Verrotti A, Loiacono G, Rossi A, Zaccara G. Eslicarbazepine acetate: an update on efficacy and safety in epilepsy. *Epilepsy Res.* 2014 Jan;108(1):1-10. doi: 10.1016/j.eplepsyres.2013.10.005. Epub 2013 Oct 23. Review. PubMed PMID: 24225327.

Elger C, Bialer M, Falcão A, Vaz-da-Silva M, Nunes T, Almeida L, Soares-da-Silva P. Pharmacokinetics and tolerability of eslicarbazepine acetate and oxcarbazepine at steady state in healthy volunteers. *Epilepsia.* 2013 Aug;54(8):1453-61. doi: 10.1111/epi.12242. Epub 2013 Jun 12. PubMed PMID: 23758485.

**Inhibitor · Natural Compounds · Compound Libraries · Recombinant Proteins**

This product is for Research Use Only · Not for Human or Veterinary or Therapeutic Use

Tel:781-999-4286 E\_mail:info@targetmol.com Address:34 Washington Street,Wellesley Hills,MA 02481