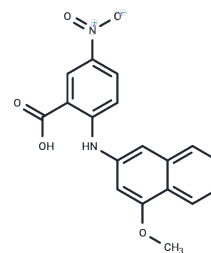


MONNA

Chemical Properties

CAS No. :	1572936-83-4
Formula:	C ₁₈ H ₁₄ N ₂ O ₅
Molecular Weight:	338.31
Storage:	Powder: -20°C for 3 years In solvent: -80°C for 1 year Actual storage temperature shall be subject to the COA.



Biological Description

Description	MONNA is a potent TMEM16A (Anoctamin-1) blocker (IC ₅₀ : 80 nM). It induces vasorelaxation of rodent resistance arteries in presence or absence of chloride ions.
Targets(IC ₅₀)	Chloride channel
In vitro	The TMEM16A-specific inhibitor, MONNA, hyperpolarised the membrane potential in U46619. MONNA, T16Ainh -A01, and Ani9 attenuated 5-HT/U46619-induced contractions. MONNA and T16Ainh -A01 also increased coronary flow in Langendorff perfused rat heart preparations. TMEM16A mRNA was increased in coronary artery smooth muscle cells from SHR, and U46619 and 5-HT were more potent in arteries from SHR than in those from normal Wistar rats. MONNA diminished this increased sensitivity to U46619 and 5-HT[1].

Solubility Information

Solubility	DMSO: 25 mg/mL (73.9 mM), Sonication is recommended. (< 1 mg/ml refers to the product slightly soluble or insoluble)
------------	--

Preparing Stock Solutions

	1mg	5mg	10mg
1 mM	2.9559 mL	14.7793 mL	29.5587 mL
5 mM	0.5912 mL	2.9559 mL	5.9117 mL
10 mM	0.2956 mL	1.4779 mL	2.9559 mL
50 mM	0.0591 mL	0.2956 mL	0.5912 mL

Please select the appropriate solvent to prepare the stock solution, according to the solubility of the product in different solvents. Please use it as soon as possible.

Note: The dilution table applies only to solid products. For liquid products, please calculate the stock solution based on the stated concentration and/or density.

Reference

TMEM16A is implicated in the regulation of coronary flow and is altered in hypertension[J]. British Journal of Pharmacology, 2019, 176(11).

Oh S J , Hwang S J , Jung J , et al. MONNA, a Potent and Selective Blocker for Transmembrane Protein with Unknown Function 16/Anoctamin-1[J]. Molecular Pharmacology, 2013, 84(5):726-735.

Inhibitor · Natural Compounds · Compound Libraries · Recombinant Proteins

This product is for Research Use Only· Not for Human or Veterinary or Therapeutic Use

Tel:781-999-4286 E_mail:info@targetmol.com Address:34 Washington Street,Wellesley Hills,MA 02481