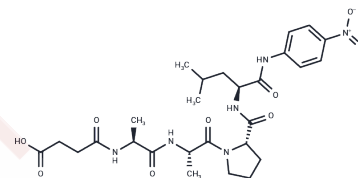


Suc-Ala-Ala-Pro-Leu-pNA

Chemical Properties

CAS No. :	70968-04-6
Formula:	C ₂₇ H ₃₈ N ₆ O ₉
Molecular Weight:	590.63
Storage:	Keep away from moisture Powder: -20°C for 3 years In solvent: -80°C for 1 year <small>Actual storage temperature shall be subject to the COA.</small>



Biological Description

Description	Suc-Ala-Ala-Pro-Leu-pNA is a peptide utilised in biochemical experiments and drug synthesis research.
Targets(IC50)	Others

Preparing Stock Solutions

	1mg	5mg	10mg
1 mM	1.6931 mL	8.4655 mL	16.9311 mL
5 mM	0.3386 mL	1.6931 mL	3.3862 mL
10 mM	0.1693 mL	0.8466 mL	1.6931 mL
50 mM	0.0339 mL	0.1693 mL	0.3386 mL

Please select the appropriate solvent to prepare the stock solution, according to the solubility of the product in different solvents. Please use it as soon as possible.

Note: The dilution table applies only to solid products. For liquid products, please calculate the stock solution based on the stated concentration and/or density.

Inhibitor · Natural Compounds · Compound Libraries · Recombinant Proteins

This product is for Research Use Only · Not for Human or Veterinary or Therapeutic Use

Tel:781-999-4286 E_mail:info@targetmol.com Address:34 Washington Street,Wellesley Hills,MA 02481