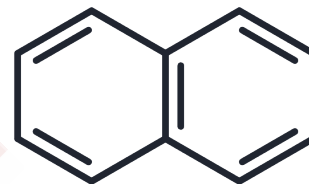


Naphthalene

Chemical Properties

CAS No. :	91-20-3
Formula:	C ₁₀ H ₈
Molecular Weight:	128.17
Storage:	Powder: -20°C for 3 years In solvent: -80°C for 1 year Actual storage temperature shall be subject to the COA.



Biological Description

Description	Naphthalene is the simplest polycyclic aromatic hydrocarbon (PAH) and a major component of coal tar, serving as an insect repellent in camphor balls and exhibiting antibacterial activity against <i>S. aureus</i> and <i>E. coli</i> .
Targets(IC50)	Antibacterial

Preparing Stock Solutions

	1mg	5mg	10mg
1 mM	7.8021 mL	39.0107 mL	78.0214 mL
5 mM	1.5604 mL	7.8021 mL	15.6043 mL
10 mM	0.7802 mL	3.9011 mL	7.8021 mL
50 mM	0.156 mL	0.7802 mL	1.5604 mL

Please select the appropriate solvent to prepare the stock solution, according to the solubility of the product in different solvents. Please use it as soon as possible.

Note: The dilution table applies only to solid products. For liquid products, please calculate the stock solution based on the stated concentration and/or density.

Reference

Zhang X,et,al. Discovery of indane and naphthalene derivatives as USP7 inhibitors. Eur J Med Chem. 2025 Oct 5; 295:117824.

Inhibitor · Natural Compounds · Compound Libraries · Recombinant Proteins

This product is for Research Use Only. Not for Human or Veterinary or Therapeutic Use

Tel:781-999-4286 E_mail:info@targetmol.com Address:34 Washington Street,Wellesley Hills,MA 02481