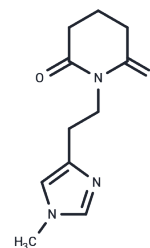


1-[2-(1-Methyl-1H-imidazol-4-yl)ethyl]-2,6-piperidinedione

Chemical Properties

CAS No. :	1631989-81-5
Formula:	C ₁₁ H ₁₅ N ₃ O ₂
Molecular Weight:	221.26
Storage:	Powder: -20°C for 3 years In solvent: -80°C for 1 year Actual storage temperature shall be subject to the COA.



Biological Description

Description	1-[2-(1-Methyl-1H-imidazol-4-yl)ethyl]-2,6-piperidinedione is a high-purity biochemical reagent used for high-throughput screening and lead compound discovery. 1-[2-(1-Methyl-1H-imidazol-4-yl)ethyl]-2,6-piperidinedione is commonly used in fragment screening or structural optimization studies in medicinal chemistry. 1-[2-(1-Methyl-1H-imidazol-4-yl)ethyl]-2,6-piperidinedione is primarily employed as research-grade intermediates or candidate molecules, rather than active pharmaceutical ingredients with established mechanisms of action.
Targets(IC50)	Others

Preparing Stock Solutions

	1mg	5mg	10mg
1 mM	4.5196 mL	22.5978 mL	45.1957 mL
5 mM	0.9039 mL	4.5196 mL	9.0391 mL
10 mM	0.452 mL	2.2598 mL	4.5196 mL
50 mM	0.0904 mL	0.452 mL	0.9039 mL

Please select the appropriate solvent to prepare the stock solution, according to the solubility of the product in different solvents. Please use it as soon as possible.

Note: The dilution table applies only to solid products. For liquid products, please calculate the stock solution based on the stated concentration and/or density.

Inhibitor · Natural Compounds · Compound Libraries · Recombinant Proteins

This product is for Research Use Only · Not for Human or Veterinary or Therapeutic Use

Tel: 781-999-4286 E_mail: info@targetmol.com Address: 34 Washington Street, Wellesley Hills, MA 02481