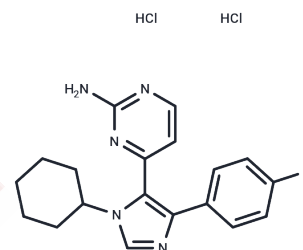


PF-670462

Chemical Properties

CAS No. : 950912-80-8
 Formula: C₁₉H₂₂Cl₂FN₅
 Molecular Weight: 410.32
 Storage: Powder: -20°C for 3 years | In solvent: -80°C for 1 year
Actual storage temperature shall be subject to the COA.



Biological Description

Description	PF-670462 is a potent (IC ₅₀ = 7.7 ± 2.2 nM) and selective (>30-fold with respect to 42 additional kinases) inhibitor of CK1ε in isolated enzyme preparations.
Targets(IC ₅₀)	Casein Kinase

Solubility Information

Solubility	DMSO: 145 mg/mL (353.38 mM),Sonication is recommended. (< 1 mg/ml refers to the product slightly soluble or insoluble)
In vivo Formulation	10% DMSO+40% PEG300+5% Tween-80+45% Saline: 2.5 mg/mL (6.09 mM),Sonication is recommended. <i>Please add the solvents sequentially, clarifying the solution as much as possible before adding the next one. Dissolve by heating and/or sonication if necessary. Working solution is recommended to be prepared and used immediately. The formulation provided above is for reference purposes only. In vivo formulations may vary and should be modified based on specific experimental conditions.</i>

Preparing Stock Solutions

	1mg	5mg	10mg
1 mM	2.4371 mL	12.1856 mL	24.3712 mL
5 mM	0.4874 mL	2.4371 mL	4.8742 mL
10 mM	0.2437 mL	1.2186 mL	2.4371 mL
50 mM	0.0487 mL	0.2437 mL	0.4874 mL

Please select the appropriate solvent to prepare the stock solution, according to the solubility of the product in different solvents. Please use it as soon as possible.

Note: The dilution table applies only to solid products. For liquid products, please calculate the stock solution based on the stated concentration and/or density.

Reference

Daniel I Perez, et al. Med Res Rev.2011,31(6): 924-954.

Huang Q, Jiang M, Xia Z Y, et al. Role of CK1 ϵ -regulated PERIOD2 in STZ-induced diabetic myocardial injury.

Frontiers in Bioscience-Landmark. 2022, 27(2): 58-58.

Inhibitor · Natural Compounds · Compound Libraries · Recombinant Proteins

This product is for Research Use Only· Not for Human or Veterinary or Therapeutic Use

Tel:781-999-4286 E_mail:info@targetmol.com Address:34 Washington Street,Wellesley Hills,MA 02481