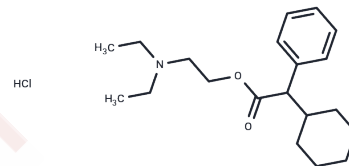


## Drofenine hydrochloride

## Chemical Properties

CAS No. :	548-66-3
Formula:	C <sub>20</sub> H <sub>31</sub> NO <sub>2</sub> ·HCl
Molecular Weight:	353.93
Storage:	Powder: -20°C for 3 years   In solvent: -80°C for 1 year Actual storage temperature shall be subject to the COA.



## Biological Description

Description	Drofenine hydrochloride (Hexahydroadiphenine hydrochloride) is an effective competitive inhibitor of BChE (K <sub>i</sub> value: 3 μM).
Targets(IC50)	Cholinesterase (ChE)

## Solubility Information

Solubility	DMSO: 15 mg/mL (42.38 mM), Sonication is recommended. (< 1 mg/ml refers to the product slightly soluble or insoluble)
In vivo Formulation	10% DMSO+40% PEG300+5% Tween 80+45% Saline: 2 mg/mL (5.65 mM), Sonication is recommended. <i>Please add the solvents sequentially, clarifying the solution as much as possible before adding the next one. Dissolve by heating and/or sonication if necessary. Working solution is recommended to be prepared and used immediately. The formulation provided above is for reference purposes only. In vivo formulations may vary and should be modified based on specific experimental conditions.</i>

## Preparing Stock Solutions

	1mg	5mg	10mg
1 mM	2.8254 mL	14.1271 mL	28.2542 mL
5 mM	0.5651 mL	2.8254 mL	5.6508 mL
10 mM	0.2825 mL	1.4127 mL	2.8254 mL
50 mM	0.0565 mL	0.2825 mL	0.5651 mL

Please select the appropriate solvent to prepare the stock solution, according to the solubility of the product in different solvents. Please use it as soon as possible.

Note: The dilution table applies only to solid products. For liquid products, please calculate the stock solution based on the stated concentration and/or density.

Reference

Pawelczyk E, et al. Acta Pol Pharm. 1971; 28(6):594-602.

**Inhibitor · Natural Compounds · Compound Libraries · Recombinant Proteins**

This product is for Research Use Only · Not for Human or Veterinary or Therapeutic Use

Tel:781-999-4286 E\_mail:info@targetmol.com Address:34 Washington Street,Wellesley Hills,MA 02481