

Anti-TUBB Antibody-HRP (8X869)

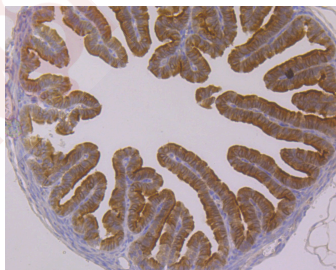
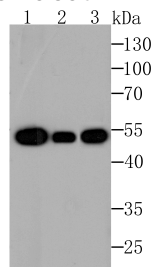
Product Details

Reactivity:	Human,Mouse,Rat,zebrafish
Conjugation:	Unconjugated
Molecular Weight:	Theoretical: 50 kDa.
Clone:	8X869
Purification:	ProA affinity purified

Applications

Verified Activity:

1. Western blot analysis of beta Tubulin-HRP on different lysates using anti-beta Tubulin-HRP antibody at 1/1,000 dilution. Positive control: Lane 1: HeLa, Lane 2: NIH-3T3, Lane 3: PC-12.
2. Immunohistochemical analysis of paraffin-embedded mouse fallopian tube tissue using anti-beta Tubulin-HRP in antibody. Counter stained with hematoxylin.



Application:	IHC,WB
Recommended	WB: 1:500-2000; IHC: 1:50-200

Properties

Stability & Storage:	Store at -20°C or -80°C for 12 months. Avoid repeated freeze-thaw cycles. Keep away from direct sunlight.
Shipping:	Shipping with blue ice.

Antigen Details

Immunogen: Peptide
Uniprot ID: P07437
Synonyms: TUBB;Tubulin beta chain;TUBB5;Tubulin beta-5 chain

Research Background

Tubulin is one of several members of a small family of globular proteins. The most common members of the tubulin family are α -tubulin and β -tubulin. The beta-tubulin (relative molecular weight about 50 kDa) is counterpart of alpha-tubulin in tubulin heterodimer, it is coded by multiple tubulin genes and it is also posttranslationally modified. Heterogeneity of subunit is concentrated in C-terminal structural domain. Beta-Tubulin may have bound GTP or GDP. Under certain conditions β -tubulin can hydrolyze its bound GTP to GDP plus Pi, release the Pi, and exchange the GDP for GTP.

Inhibitor · Natural Compounds · Compound Libraries · Recombinant Proteins

This product is for Research Use Only · Not for Human or Veterinary or Therapeutic Use

Tel:781-999-4286 E_mail:info@targetmol.com Address:34 Washington Street,Wellesley Hills,MA 02481