

Anti-TUBB Antibody (7E229)

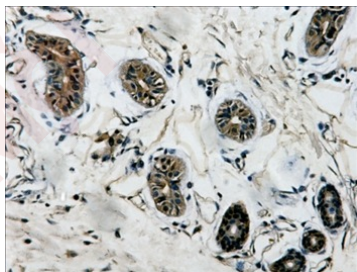
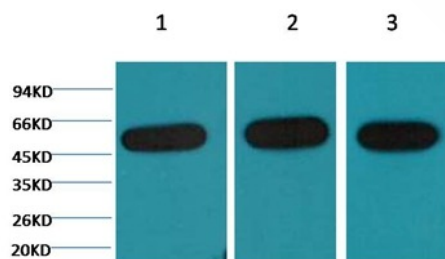
Product Details

Reactivity:	Human, Mouse, Rat, Monkey, Dog, Chicken, Hamouseter, Rabbit, Sheep
Conjugation:	Unconjugated
Molecular Weight:	Actual: 55 kDa.
Clone:	7E229
Purification:	Affinity purification using immunogen.

Applications

Verified Activity:

1. Western blot analysis of 1) Hela ,2) Mouse Kidney tissue, 3) Rat Heart tissue, using TMAC-04346 diluted at 1:5,000.
2. IHC staining of Human colon tissue with β -tubulin mouse mAb diluted at 1:200.



Application:	IF, IHC, WB
Recommended	WB: 1:5000-10000; IHC: 1:200

Properties

Stability & Storage:	Store at -20°C or -80°C for 12 months. Avoid repeated freeze-thaw cycles.
Shipping:	Shipping with blue ice.

Antigen Details

Uniprot ID: P07437

Synonyms: TUBB5;Tubulin beta-5 chain;Tubulin beta chain;TUBB

Research Background

Microtubules are constituent parts of the mitotic apparatus, cilia, flagella, and elements of the cytoskeleton. They consist principally of 2 soluble proteins, alpha- and beta-tubulin, each of about 55,000 Da. Antibodies against beta Tubulin are useful as loading controls for Western Blotting. However it should be noted that levels of β -Tubulin may not be stable in certain cells. For example, expression of β -Tubulin in adipose tissue is very low and therefore β -Tubulin should not be used as loading control for these tissues.

Inhibitor · Natural Compounds · Compound Libraries · Recombinant Proteins

This product is for Research Use Only · Not for Human or Veterinary or Therapeutic Use

Tel:781-999-4286 E_mail:info@targetmol.com Address:34 Washington Street,Wellesley Hills,MA 02481