

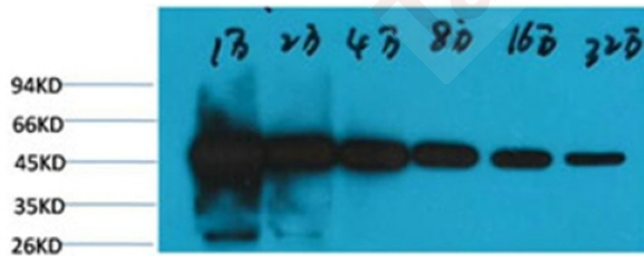
## Anti-TUBB Antibody (2B457)

### Product Details

Ig Type:	IgG1
Reactivity:	Human,Rat,Mouse,Monkey,Dog,Chicken,Hamouseter,Rabbit,Sheep,Insect,Yeast
Conjugation:	Unconjugated
Molecular Weight:	Theoretical: 55 kDa.
Clone:	2B457

### Applications

Verified Activity: 1. Western blot analysis of Hela, with  $\beta$ -tubulin-HRP Conjugated diluted at 1:10,000, 20,000, 40,000, 80,000, 160,000, 320,000.



Application:	IHC,WB
Recommended	WB: 1:1000-3000

### Properties

Stability & Storage: Store at -20°C or -80°C for 12 months. Avoid repeated freeze-thaw cycles.  
Shipping: Shipping with blue ice.

### Antigen Details

Immunogen:	Recombinant Protein
Uniprot ID:	P07437
Synonyms:	Tubulin beta-5 chain;Tubulin beta chain;TUBB;TUBB5

**Inhibitor · Natural Compounds · Compound Libraries · Recombinant Proteins**

This product is for Research Use Only. Not for Human or Veterinary or Therapeutic Use

Tel:781-999-4286 E\_mail:info@targetmol.com Address:34 Washington Street,Wellesley Hills,MA 02481