

Anti-TUBB Antibody (8X869)

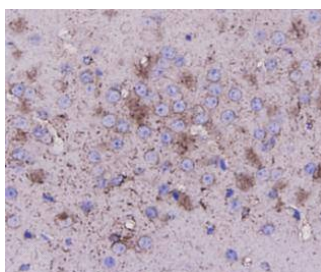
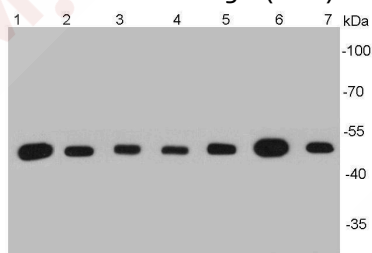
Product Details

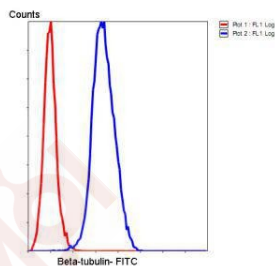
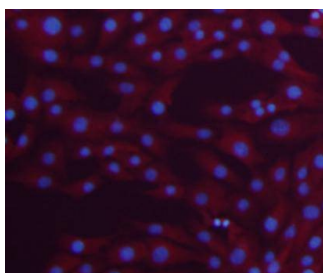
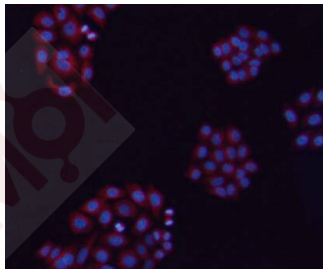
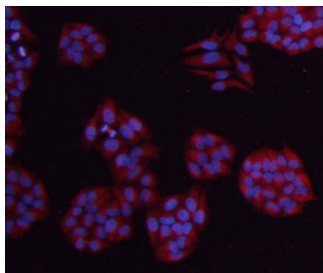
Reactivity:	Human, Mouse, Rat, zebrafish
Conjugation:	Unconjugated
Molecular Weight:	Theoretical: 50 kDa.
Clone:	8X869
Purification:	ProA affinity purified

Applications

Verified Activity:

1. Western blot analysis of β -tubulin on different cell lysates using anti- β -tubulin antibody at 1/5000 dilution. Positive control: Lane 1: NCCIT, Lane 2: NIH/3T3, Lane 3: PC12, Lane 4: Mouse heart, Lane 5: F9, Lane 6: zebrafish brain, Lane 7: HeLa.
2. Immunohistochemical analysis of paraffin-embedded mouse brain tissue using anti- β -tubulin antibody. Counter stained with hematoxylin.
3. ICC staining β -tubulin in HeLa cells (red). The nuclear counter stain is DAPI (blue). Cells were fixed in paraformaldehyde, permeabilised with 0.25% Triton X100/PBS.
4. ICC staining β -tubulin in HepG2 cells (red). The nuclear counter stain is DAPI (blue). Cells were fixed in paraformaldehyde, permeabilised with 0.25% Triton X100/PBS.
5. ICC staining β -tubulin in NIH/3T3 cells (red). The nuclear counter stain is DAPI (blue). Cells were fixed in paraformaldehyde, permeabilised with 0.25% Triton X100/PBS.
6. Flow cytometric analysis of HeLa cells with β -tubulin antibody at 1/50 dilution (blue) compared with an unlabelled control (cells without incubation with primary antibody; red). Goat anti mouse IgG (FITC) was used as the secondary antibody.





Application: FCM,ICC,IHC,WB

Recommended WB: 1:5000-10000; IHC: 1:20; ICC: 1:200; FCM: 1:50-100

Properties

Stability & Storage: Store at -20°C or -80°C for 12 months. Avoid repeated freeze-thaw cycles.

Shipping: Shipping with blue ice.

Antigen Details

Immunogen: Peptide

Uniprot ID: P07437

Synonyms: Tubulin beta chain;TUBB5;Tubulin beta-5 chain;TUBB

Research Background

Tubulin is one of several members of a small family of globular proteins. The most common members of the tubulin family are α -tubulin and β -tubulin. The beta-tubulin (relative molecular weight about 50 kDa) is counterpart of alpha-tubulin in tubulin heterodimer, it is coded by multiple tubulin genes and it is also posttranslationally modified. Heterogeneity of subunit is concentrated in C-terminal structural domain. Beta-Tubulin may have bound GTP or GDP. Under certain conditions β -tubulin can hydrolyze its bound GTP to GDP plus Pi, release the Pi, and

for GTP.

Inhibitor · Natural Compounds · Compound Libraries · Recombinant Proteins

This product is for Research Use Only · Not for Human or Veterinary or Therapeutic Use

Tel:781-999-4286 E_mail:info@targetmol.com Address:34 Washington Street,Wellesley Hills,MA 02481