

## Anti-Beta-Actin Antibody (2J441)

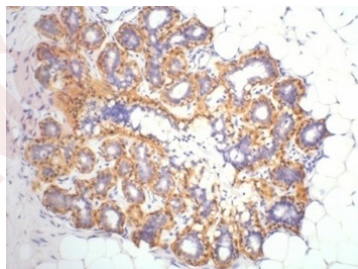
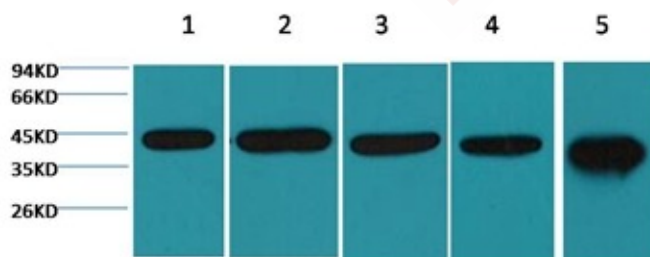
### Product Details

Reactivity: Human,Rat,Mouse,Monkey,Dog,Chicken,Hamouseter,Rabbit,Pig,Sheep  
Conjugation: Unconjugated  
Molecular Weight: Actual: 45 kDa.  
Clone: 2J441  
Purification: Affinity purification using immunogen.

### Applications

#### Verified Activity:

1. Western blot analysis of 1) 293T ,2) Mouse Kidney tissue, 3) Hela, 4) Rat Heart tissue, 5) Rat Brain tissue, using TMAC-04337 diluted at 1:5,000.
2. IHC staining of Human ovary tissue with  $\beta$ -Actin mouse mAb diluted at 1:200.



Application: IF,IHC,WB  
Recommended WB: 1:5000-10000; IHC: 1:200

### Properties

Stability & Storage: Store at -20°C or -80°C for 12 months. Avoid repeated freeze-thaw cycles.  
Shipping: Shipping with blue ice.

### Antigen Details

Uniprot ID: P60709

Synonyms: Beta-Actin;Actin Cytoplasmic 1; $\beta$ -actin;ACTB; $\beta$ -Actin Protein

---

### Research Background

$\beta$ -actin is one of six different actin isoforms that have been identified. The actin molecules found in cells of various species and tissues tend to be very similar in their immunological and physical properties. Therefore, antibodies against  $\beta$ -actin are useful as loading controls for Western Blotting. However it should be noted that levels of  $\beta$ -actin may not be stable in certain cells. For example, expression of  $\beta$ -actin in adipose tissue is very low and therefore  $\beta$ -actin should not be used as loading control for these tissues.

**Inhibitor · Natural Compounds · Compound Libraries · Recombinant Proteins**

This product is for Research Use Only · Not for Human or Veterinary or Therapeutic Use

Tel:781-999-4286 E\_mail:info@targetmol.com Address:34 Washington Street,Wellesley Hills,MA 02481